

FS Future Series

Rover Deluxe

Version 4.0



User's Manual

Any information contained in these operating instructions may be changed without prior notice.

OKM does not make any warranty for this document. This also applies without limitation to implied assurances of merchantability and fitness for a specific purpose. OKM does not assume any responsibility for errors in this manual or for any incidental or consequential damage or loss associated with the delivery, exploitation or usage of this material.

This documentation is available "as presented" and without any kind of warranty. In no circumstances OKM takes responsibility for lost profits, usage or data loss, interruption of business activities or all kind of other indirectly damages, which developed because of errors in this documentation. This instruction manual and all other stored media, which are delivered with this package should only be used for this product. Program copies are allowed only for security- and safety purposes. The resale of these programs, in original or changed form, is absolutely forbidden.

This manual may not be copied, duplicated or translated into another language, neither in part nor completely, over the copyright matters without the prior written consent of OKM.

Copyright ©2002 – 2009 OKM Ortungstechnik GmbH. All rights reserved.

Table of contents

| | |
|---|-----------|
| <u>1 Introduction</u> | <u>7</u> |
| <u>1.1 Preface</u> | <u>8</u> |
| <u>1.2 Important Notes</u> | <u>9</u> |
| <u>1.2.1 General Notes</u> | <u>9</u> |
| <u>1.2.2 Possible Health Hazards</u> | <u>9</u> |
| <u>1.2.3 Surrounding Area</u> | <u>9</u> |
| <u>1.2.4 Voltage</u> | <u>9</u> |
| <u>1.2.5 Data safety</u> | <u>9</u> |
| <u>1.3 Maintenance and Services</u> | <u>10</u> |
| <u>1.4 Danger of Explosion during Excavation</u> | <u>10</u> |
| <u>2 Data transfer via bluetooth</u> | <u>13</u> |
| <u>2.1 Installation of bluetooth software</u> | <u>14</u> |
| <u>2.1.1 Install software and driver</u> | <u>14</u> |
| <u>2.1.2 Configurate bluetooth dongle</u> | <u>16</u> |
| <u>2.1.3 Setup connection</u> | <u>19</u> |
| <u>2.2 Uninstall bluetooth software</u> | <u>19</u> |
| <u>3 Technical specifications</u> | <u>21</u> |
| <u>3.1 Control unit with search coil</u> | <u>22</u> |
| <u>3.2 Data transfer</u> | <u>22</u> |
| <u>3.3 Computer, minimum requirements</u> | <u>22</u> |
| <u>4 Scope of delivery</u> | <u>23</u> |
| <u>5 Control elements</u> | <u>25</u> |
| <u>5.1 Control unit</u> | <u>26</u> |
| <u>5.2 Headphones</u> | <u>28</u> |
| <u>6 Assembly</u> | <u>29</u> |
| <u>7 Operating modes</u> | <u>33</u> |
| <u>7.1 Metal Detector</u> | <u>36</u> |
| <u>7.1.1 Sensitivity and metal discrimination</u> | <u>37</u> |
| <u>7.1.2 Ground balance</u> | <u>38</u> |
| <u>7.2 Magnetometer</u> | <u>40</u> |
| <u>7.3 Ground Scan</u> | <u>41</u> |
| <u>7.4 Transfer Memory To PC</u> | <u>43</u> |
| <u>7.5 Super Sensor Discrimination</u> | <u>44</u> |
| <u>8 Field procedure</u> | <u>47</u> |
| <u>8.1 General scanning procedure</u> | <u>48</u> |
| <u>8.1.1 Scan Mode</u> | <u>48</u> |
| <u>8.1.2 Regulation of the number of impulses per scanning path</u> | <u>49</u> |
| <u>8.2 Special advices for the field procedure</u> | <u>51</u> |
| <u>8.2.1 Orientation of probe</u> | <u>52</u> |

| | |
|--|----|
| 8.2.2 Parallel or Zig-Zag? | 53 |
| 8.2.3 Manual or automatic impulse mode? | 53 |
| 9 Tutorial | 55 |
| 9.1 Automatic measurement in Zig-Zag mode | 56 |
| 9.2 Transfer internal memory to computer | 58 |
| 9.2.1 Prepare software "Visualizer 3D" | 58 |
| 9.2.2 Establish bluetooth connection and transfer data | 58 |
| 9.3 Manual measurement in parallel mode | 60 |
| 9.3.1 Prepare "Visualizer 3D" software | 61 |
| 9.3.2 Establish bluetooth connection | 61 |
| 9.3.3 Performing a measurement | 62 |

Table of figures

| | |
|---|----|
| Figure 2.1: Start screen when inserting in the software CD | 14 |
| Figure 2.2: Installation of bluetooth software, step 1 | 14 |
| Figure 2.3: Installation of bluetooth software, step 2 | 15 |
| Figure 2.4: Installation of bluetooth software, step 3 | 15 |
| Figure 2.5: Installation of bluetooth software, step 4 | 15 |
| Figure 2.6: Installation of bluetooth software, step 5 | 16 |
| Figure 2.7: Installation of bluetooth software, step 6 | 16 |
| Figure 2.8: Installation of bluetooth software, step 7 | 17 |
| Figure 2.9: Installation of bluetooth software, step 8 | 17 |
| Figure 2.10: Installation of bluetooth software, step 9 | 18 |
| Figure 2.11: Installation of bluetooth software, step 10 | 18 |
| Figure 2.12: Installation of bluetooth software, step 11 | 19 |
| Figure 5.1: Overview of control elements of the control unit | 26 |
| Figure 5.2: Control elements of wireless headphones | 28 |
| Figure 6.1: Mount the search coil (1) | 30 |
| Figure 6.2: Mount the search coil (2) | 30 |
| Figure 6.3: Mount the search coil (3) | 30 |
| Figure 6.4: Connect the probe | 31 |
| Figure 6.5: Connect control chip | 31 |
| Figure 6.6: Connect power pack for power supply | 31 |
| Figure 6.7: Pocket the power pack | 32 |
| Figure 7.1: Overview about menu structure | 35 |
| Figure 7.2: Handling the Rover Deluxe in operating mode "Metal Detector" | 36 |
| Figure 7.3: Swinging the search coil in operating mode "Metal Detector" | 36 |
| Figure 7.4: Control panel for operating mode "Metal Detector" | 37 |
| Figure 7.5: Probe should point always to the down and should not be turned | 40 |
| Figure 7.6: The search coil should be bent while using "Ground Scan" | 41 |
| Figure 7.7: Display representation in operating mode "Ground Scan" | 42 |
| Figure 7.8: "Zig-Zag" scanning in mode Ground Scan | 43 |
| Figure 7.9: Position of the Supersensor during a measurement | 44 |
| Figure 7.10: Configuration of the 3d software in operating mode "Super Sensor Discrimination" | 45 |
| Figure 7.11: Signature of a ferromagnetic metal target | 45 |
| Figure 7.12: Signature of a non-ferromagnetic metal target | 46 |
| Figure 7.13: Signature of a non-metallic target | 46 |
| Figure 8.1: Starting position of a scan area | 48 |
| Figure 8.2: Scan modes to measure an area | 49 |
| Figure 8.3: Effects of changing the number of impulses and their distance | 50 |
| Figure 8.4: Comparison of low and high number of impulses | 50 |
| Figure 8.5: Different walking speeds during scanning | 51 |
| Figure 9.1: Measure area for a survey in mode "Ground Scan" | 56 |
| Figure 9.2: Preparation of a new data transfer in "Visualizer 3D" | 58 |
| Figure 9.3: Measure area for a survey in mode "Ground Scan" | 60 |
| Figure 9.4: Preparation of a new data transfer in "Visualizer 3D" | 61 |

CHAPTER 1

Introduction

1.1 Preface

Dear customer,

in the first instance we want to thank you that you made your decision on a product of OKM Ortungstechnik GmbH.

With the Rover Deluxe you purchased a product which is based on a electromagnetic pulse method which can be used to locate anomalies in the target area. Thus the device is able to detect natural features such as formations of strata, cavities, groundwater level as well as sepulchers or buried objects such as pipes, tanks, boxes or suchlike.

The Rover Deluxe is able to locate, to document and to analyze buried objects with different structures, without making necessary any excavation. Particularly in areas next to the surface there are many advantages to geoelectric, seismic and magnetic procedures and it is further more a useful complement to these methods. The Rover Deluxe has a facile and flexible handling and provides fast and easy reproducible results.

With our team of specialists we guarantee that our products are under recurrent control. Our specialists try to implement new developments in terms of further quality improvements for you.

Of course by selling our products we cannot guarantee that you really make a find during your research. The recognition of hidden objects and structures depends on a huge number of factors - like you know. Determining factors are the dielectric constant of the ground, the grade of mineralization and the dimensions of an object relating to its depth. Specially in very wet soil, clay and sand with high conductivity of the ground, recording of the measured results can be falsified strongly.

With this product you purchased a device which stood the tests in regular operation like all other products of us. If you are interested in where our devices have gone into action please visit our homepage.

For our company it is necessary that we protect our developments within the framework of existing legislation to a patent or trademark registration. Therewith we offer you a higher warranty while using our products.

Please take your time consecutively, read this user's manual and familiarize yourself with the utilization and operation of this Rover Deluxe.

1.2 Important Notes

Please read these operating instructions carefully and closely before using Rover Deluxe and its accessories! These instructions give information on how to use the device and point out potential sources of danger.

Rover Deluxe and its accessories serves for documentation and analysis of detect objects deposited and changes performed in the ground. The registered data of the ground structure will be transmitted to a PC for visual representation in a special software program using the components we offer. Any additional notes relating to this has to be observed. Please read attentively the manual according to the software you are using!

1.2.1 General Notes

Being an electronic device, Rover Deluxe has to be treated with the caution and care necessary when such devices are used. Any failure to observe the safety precautions given or any use for purposes other than the ones it is conceived for may result in a damage or destruction of the processing unit and connected components.

The device will get destroyed if it is opened improperly.

1.2.2 Possible Health Hazards

If used properly the device normally does not pose any health hazards. According to current scientific knowledge, the high-frequency signals are not harmful to the human body on account of their low power.

1.2.3 Surrounding Area

Having been transferred from a cold to a warmer place, the device should not be operated immediately afterwards. Any condensation, which may have formed, might cause the device to get destroyed. Avoid strong magnetic fields, which may occur in places such as near machines or loudspeakers, and avoid using a detector within a radius of 50 meters.

Metallic objects on the ground such as cans, doses, catches, nails, screw or others can influence negatively your measurement and have to be removed. Also you have to remove keys, telephones, chains and rings and all other magnetic and metallic objects from yourself.

1.2.4 Voltage

The power supply should not be outside the indicated range of values. Use only chargers, batteries and rechargeable batteries which are included in the scope of delivery.

Never use the 230 Volt mains supply.

1.2.5 Data safety

There can be errors in the process of data collection if

- the range of the sender module is been exceeded,
- the power supply of the device is to low,
- the cables you are using are to long,
- other electronic devices sends out disturbances or
- atmospherics occurs (lightnings, ...).

1.3 Maintenance and Services

In this section you will learn how to maintain your measuring instrument with all included accessories to keep it in good condition a long time and to get good measuring results.

The following list indicates what you absolutely should avoid:

- penetrating water
- strong dirt and dust deposits
- hard impacts
- strong magnetic fields
- high and long lasting heat effect

If you want to clean your device please use a dry rag of soft material. To avoid any damage you should transport the device and accessories always in the appropriate carrying cases.

Beware that all batteries and accumulators are always charged fully while operating with your system. You should only load the batteries when they are completely discharged no matter if you are working with the external power supply or with the internal accumulators. In this way a long durability of the used batteries is guaranteed.

To load the external and internal batteries you have to use only chargers which are part of our scope of delivery.

1.4 Danger of Explosion during Excavation

Unfortunately, the last two world wars also made the ground in many places of the world a potentially explosive scrap heap. A host of those lethal relics are still buried in the ground. Do not start digging and hacking for an object wildly when you receive a signal of a piece of metal from your device. Firstly, you might indeed cause irreparable damage to a truly rare find, and secondly, there is a chance that the object reacts in an insulted way and strikes back.

Note the color of the ground close to the surface. A red or reddish color of the ground is an indicator of rust traces. As regards the finds themselves, you should definitely pay attention to their shape. Curved or round objects should be a sign of alarm, especially if buttons, rings or little pegs can be identified or felt. The same applies to recognizable ammunition or bullets and shells. Leave that stuff where it is, do not touch anything and, most importantly, do not take any of it home with you. The killing machines of

war made use of diabolical inventions such as rocker fuses, acid fuses and ball fuses. Those components have been rusting away in the course of time, and the slightest movement may cause parts of them to break and be triggered. Even seemingly harmless objects such as cartridges or large ammunition are anything but that. Explosives may have become crystalline over time, that is, sugar-like crystals have formed.

Moving such an object may cause those crystals to produce friction, leading to an explosion. If you come across such relics, mark the place and do not fail to report the find to the police. Such objects always pose a danger to the life of hikers, walkers, farmers or children.

CHAPTER 2

Data transfer via bluetooth

In this section you will learn how to install the bluetooth software on your computer. This software is necessary to transfer all measured data from your Rover Deluxe to the computer.

2.1 Installation of bluetooth software

In the first section of this chapter it will be explained how to install the bluetooth software. Please note that the represented figures do not necessarily correspond to the current version of your operating system or the version of usb installation.

2.1.1 Install software and driver

The bluetooth software is situated on the software CD which is included in the scope of delivery. Place the CD inside the CD Rom drive of your computer and wait until a window like shown in figure 2.1 appears.

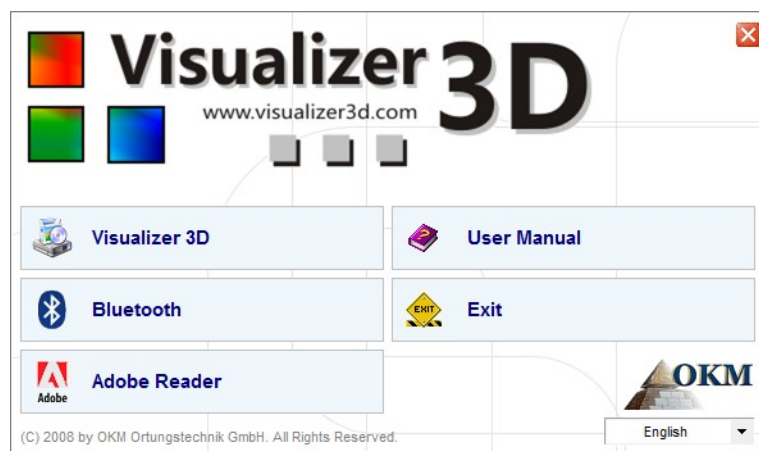
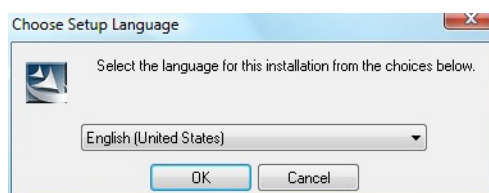


Figure 2.1: Start screen when inserting in the software CD

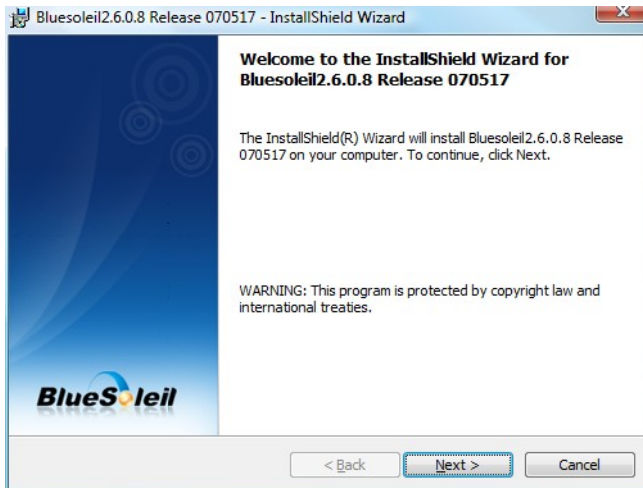
Click on the entry *Bluetooth*, to start the installation of the bluetooth software and follow the instructions on the screen of your computer, like it is explained in the following steps.



Step 1

Select the language and click on the button "OK".

Figure 2.2: Installation of bluetooth software, step 1



Step 2

Click on "Next >".

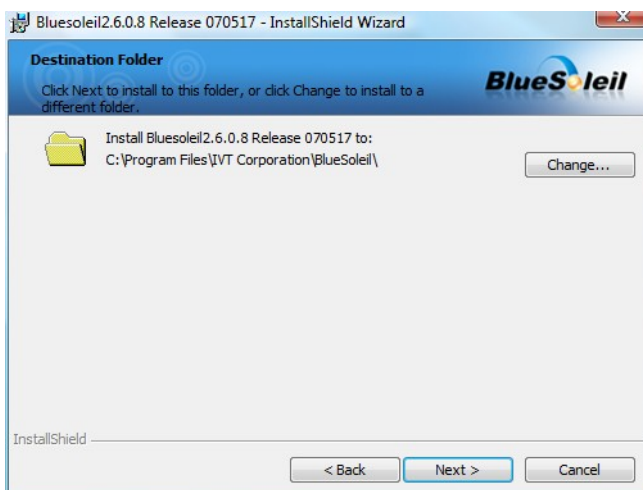
Figure 2.3: Installation of bluetooth software, step 2



Step 3

Mark the entry "I accept the terms in the license agreement" and after that click on "Next >".

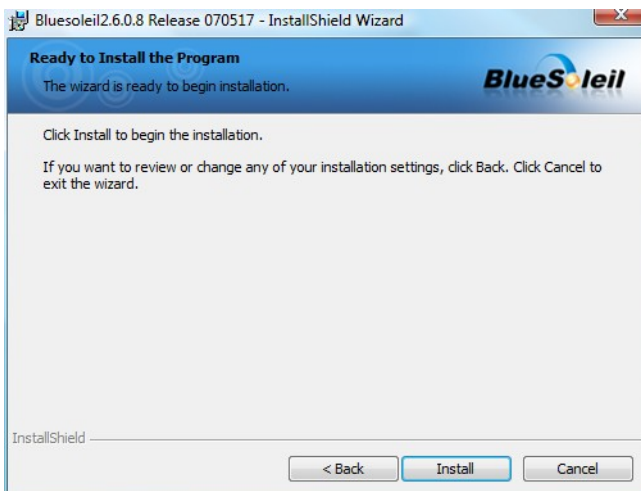
Figure 2.4: Installation of bluetooth software, step 3



Step 4

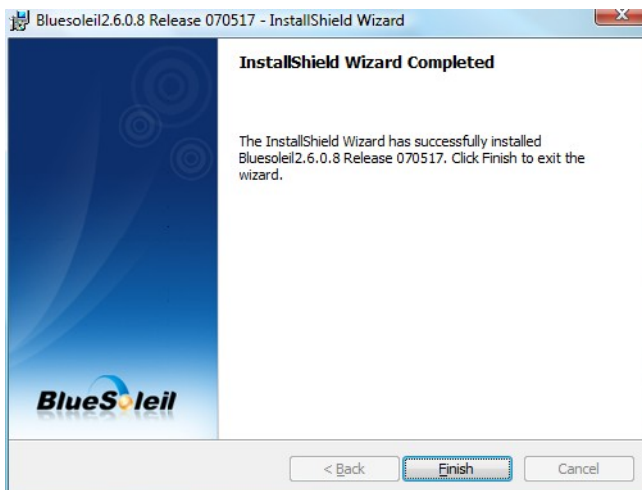
Click on "Next >".

Figure 2.5: Installation of bluetooth software, step 4

**Step 5**

Click on "Install".

Figure 2.6: Installation of bluetooth software, step 5

**Step 6**

Click on "Finish".

Figure 2.7: Installation of bluetooth software, step 6

Restart your computer after finishing the installation, to agree to the changes on your system!

2.1.2 Configure bluetooth dongle

After restarting your computer the bluetooth software should open automatically. Check if you can find the bluetooth icon (grey/white) on the down right side of the task bar.



If you do not find this symbol there, you should start the bluetooth software manually. In this case just click on the bluetooth symbol, which has been created on your desktop during the installation.

Step 7

Double click on the new created bluetooth symbol on your desktop to open a window like here on the right side.

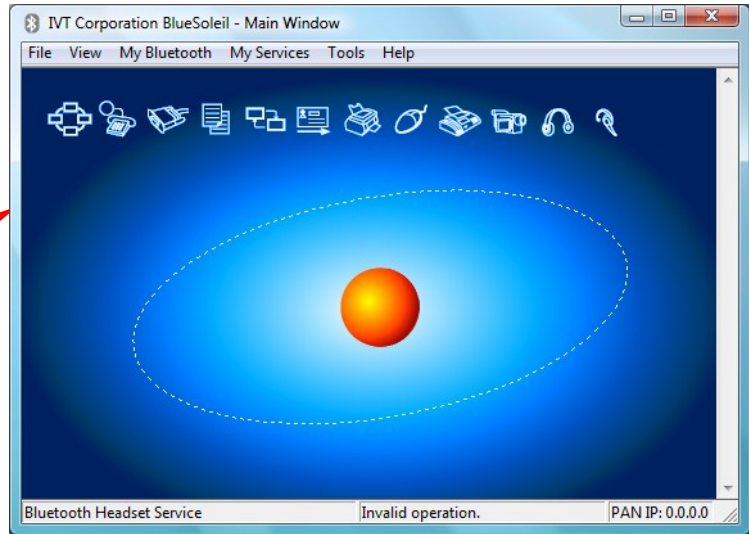
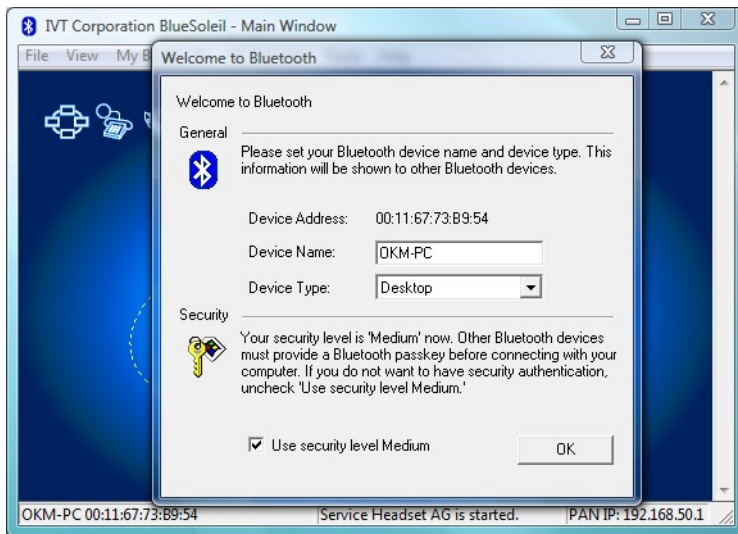


Figure 2.8: Installation of bluetooth software, step 7

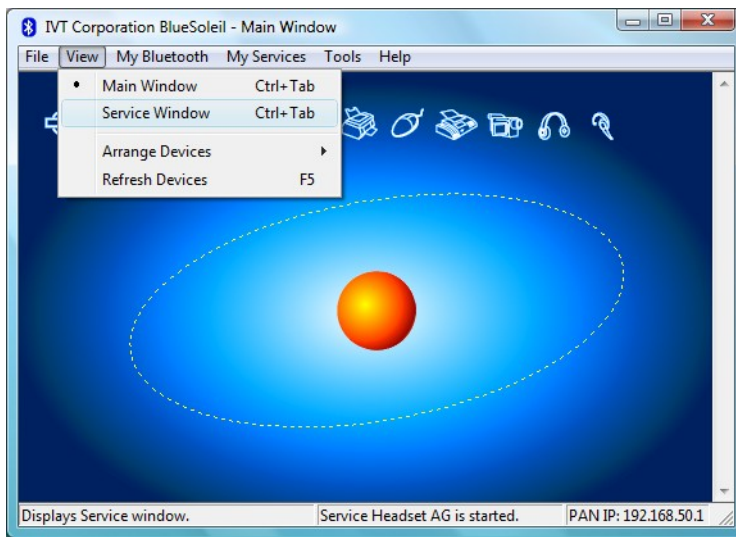


Step 8

Plug in the bluetooth dongle in a free USB connection of your computer. When the dialog from the left figure appears click on "OK".

Figure 2.9: Installation of bluetooth software, step 8

Now the bluetooth drivers will be installed on your computer. This can take several minutes, depending on your computer. Please wait until all drivers are installed successfully and then continue with step 9.

**Step 9**

Click in the menu on "View → Service window", to see the installed services.

Figure 2.10: Installation of bluetooth software, step 9

Step 10

Behind the entry "Serial Port A" you can find the assigned COM port, which you should select during the data transfer in the software Visualizer 3D.

In our example here it is COM6.

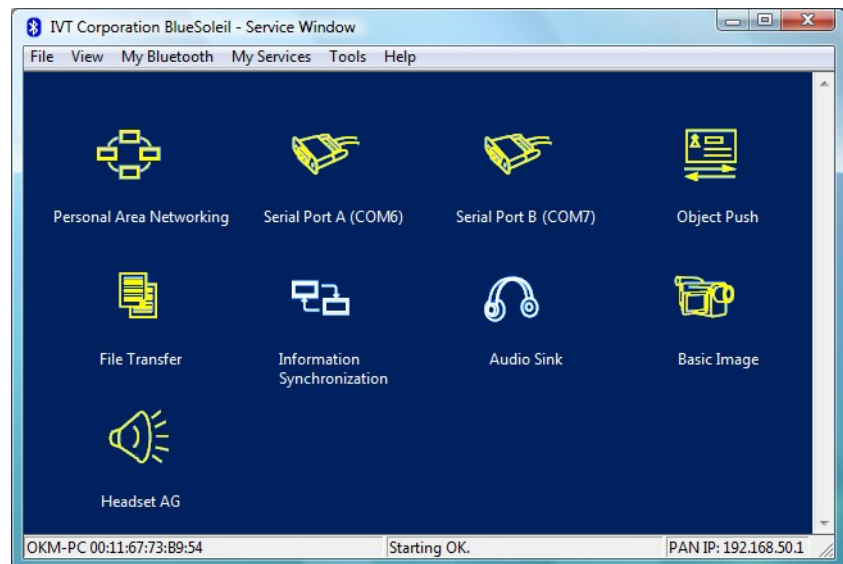


Figure 2.11: Installation of bluetooth software, step 10

2.1.3 Setup connection

When you connect the device via bluetooth for the first time, to transfer data the computer, you should enter the bluetooth passkey. The passkey is **OKM** (take care to write in capital letters!).

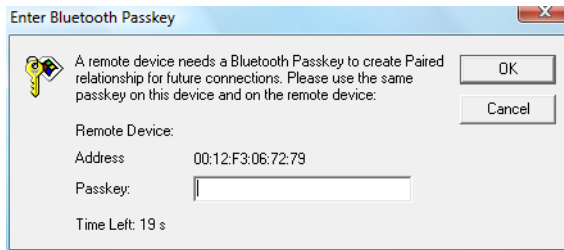


Figure 2.12: Installation of bluetooth software, step 11

Step 11

When connecting the device to computer the first time you should enter the bluetooth passkey.

Enter **OKM** in capital letters and click on "OK".



Step 12

When the bluetooth connection is established successfully the bluetooth symbol in the task bar will be visible in green.

Only after the bluetooth connection is successfully established, you can transfer data from your measuring instrument to the computer.

The measuring instrument should establish the bluetooth connection always by itself. It is not possible to search for the device via the bluetooth software. You only can use the bluetooth dongle delivered with the device!

2.2 Uninstall bluetooth software

In this section it is explained how to delete the bluetooth software from your computer.

Therefore click on the entry **Start -> All Programs -> IVT BlueSoleil -> Uninstall BlueSoleil** and follow the instruction on the screen of your computer. After uninstalling your bluetooth drivers you should reboot your computer.

CHAPTER 3

Technical specifications

The following technical indications are medial values. During operation small variations are quite possible. Technical changes due to development are possible!

3.1 Control unit with search coil

| | |
|----------------------------------|-----------------------------|
| Dimensions (H x W x D) | 450 x 550 x 150 mm |
| Weight | about 2.5 kg |
| Voltage | 12 VDC |
| Processor | Motorola, 32 MHz |
| Data memory (control chip) | about 32700 measured values |
| Operating temperature | 0 – 50 °C |
| Storage temperature | -20 – 60 °C |
| Air humidity | 5 % – 75 % |
| Waterproof | No |
| Sensor technology..... | SCMI-15-D, VLF |

3.2 Data transfer

| | |
|-----------------------------|------------------|
| Technology | Bluetooth |
| Frequency range | 2.4 – 2.4835 GHz |
| Maximum transfer rate | 1 Mbps |
| Receiving sensitivity | -85 dBm |
| Maximum range | about 100 m |

3.3 Computer, minimum requirements

The indicated values should help you for a correct selection of a suitable computer for analysis of your measured results.

| | |
|-------------------------------------|--------------------------------|
| CD-ROM drive | min. 4x |
| Interface (data transmission) | USB |
| Free disk space | min. 50 MB |
| Working memory (RAM) | min. 256 MB |
| Graphic card | min. 128 MB, OpenGL-compatible |
| Operating system | Windows XP, Windows Vista |

CHAPTER 4

Scope of delivery

In the following section you can find all standard equipment and optional parts of Rover Deluxe. The scope of delivery can be different in some circumstances because of some optional accessories which should not be included in the basic equipment.

| Description | Quantity |
|--|----------|
| Control unit | 1 |
| Wireless headphones incl. 2 batteries (AAA) | 1 |
| Probe with search coil | 1 |
| Power Pack incl. charger and traveling adapter | 1 |
| User manual | 1 |
| Carrying case | 1 |
| Software "Visualizer 3D" | 1 |
| Bluetooth dongle | 1 |
| Control chip | 2 |

Table 1: Scope of delivery

CHAPTER 5

Control elements

In this section you will learn more about the fundamental use of all control elements for this measuring instrument. All connections, inputs and outputs are explained in detail.

5.1 Control unit

Figure 5.1 represents all control elements of the control unit of Rover Deluxe.

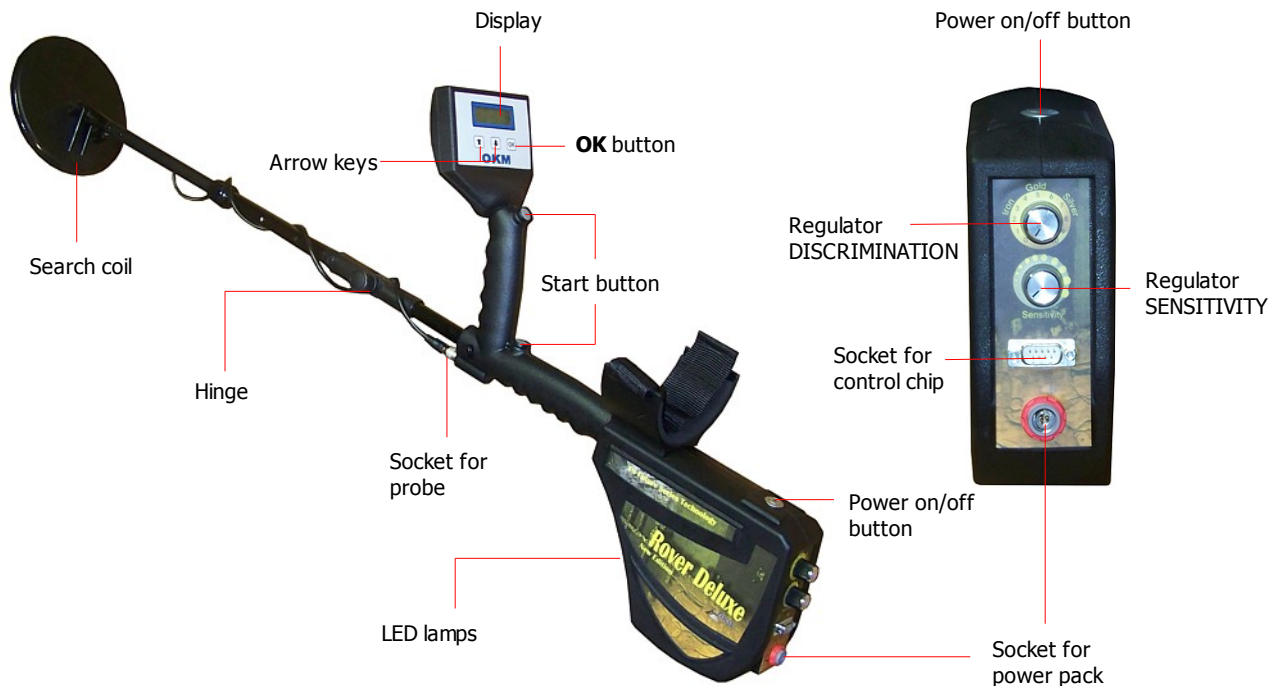


Figure 5.1: Overview of control elements of the control unit

Power on/off button: With the power on/off button you can switch on or off the device. Also the power on/off button is used to activate/deactivate the internal speakers. When the device is powered off and you press the power on/off button the device will be switched on and the LED of the power on/off button will shine green. If the device is powered on and you press the power on/off button the integrated speakers will be activated. If you press the power on/off button again, the internal speakers will be deactivated. To power off the device, you should keep pressing the power on/off button until the device powers off and the integrated LED lamp turns out.

Start button: Primarily the start button is used to start a measurement and to release every single impulse in the manual impulse mode. If you are in the main menu, the start button has an additional function. With the start button you can also power on/off the integrated LED lamps on the bottom of the device. While using the operating mode "Metal Detector" the start button is used to apply a ground balance.

Socket for power pack: Before you can power on the device you should connect the delivered power pack to the socket of power pack and switch it on. Information how to use the power pack you can find in a separate enclosed user manual.

Socket for probe: At this socket you should connect the probe (search coil or Supersensor). Without the probe there is no measurement possible.

Socket for control chip: At this socket the control chip (hardware dongle) should be connected, to guarantee a correct functioning of the device. Without connecting a control chip, the display will indicate the message *"Insert Control Chip"* and a permanent signal tone will sound.

Display: The display of the device shows all operating modes, messages and measuring states. Below the display there are 3 control buttons to operate the device. The **OK** button is mostly used to activate the selected operating mode. In some circumstances this button is allocated with another function which will be explained at the appropriate place inside this manual. By using the arrow buttons **↓** and **↑** you can switch between the operating modes in the main menu and select the options in the submenus. With these arrow buttons you can finish the measurement of an operating mode and get back into the main menu.

Hinge: Due to the usage of the device as normal metal detector or ground scanner, the hinge is used to change the orientation of the search coil.

Regulator DISCRIMINATION and SENSITIVITY: By using these regulators the integrated metal detector can be adjusted individually on the operators needs. In that way the metal discrimination and sensitivity of the search coil can be regulated. Further information about those regulations you can read in section *7.1.1 Sensitivity and metal discrimination* on page 37.

5.2 Headphones

Figure 5.2 shows all control elements of the delivered wireless headphones.



Figure 5.2: Control elements of wireless headphones

To use the delivered wireless headphones, you should insert two charged micro type AAA batteries inside the battery case. Therefore you should remove the ear pad on the left site "L" and insert the batteries into the battery case. Pay attention to use the correct polarity. Now place the ear pad again on the battery case and press carefully until it snaps into place.

Power on the wireless headphones with the power on/off button (ON/OFF) and find the correct channel with the frequency regulator (TUNE). The device Rover Deluxe should be powered on and release an acoustic signal during this adjustment. The best way is to power on the device without connecting a control chip. Then the message "*Insert Control Chip*" will appear in the display and a permanent signal tone will sound, which you can use for the optimal setting of the wireless headphones.

Via the volume control (VOLUME) you can regulate the volume of the headphones.

CHAPTER 6

Assembly

In this section is explained how to assemble the device and how to prepare a measurement.

Before you can use the device Rover Deluxe for a field measurement you should do some preparations. Please pay attention to the following steps!



Figure 6.1: Mount the search coil (1)

Step 1

The search coil is used to measure the underground values and has to be mounted onto the coil holder. Screw the search coil onto the end of the rod. Avoid hard impact or other damages.



Figure 6.2: Mount the search coil (2)

Step 2

Now put the rod with the search coil into the rod extension with the hinge. Make sure it locks into place tightly. Please select one of the lock holes which fits best to your body height!



Figure 6.3: Mount the search coil (3)

Step 3

Use the knurled screw to screw both parts of the hinge together.

Depending on the operating mode the search coil can be bent by 90°.



Figure 6.4: Connect the probe

Step 4

Connect the plug of the probe with the socket which is located under the handle of the device.

Turn the plug until it locks tightly.



Figure 6.5: Connect control chip

Step 5

Without the control chip the device cannot be activated. It is used as a safety key. Connect the control chip to the designed socket!

Furthermore it is used as a memory chip to store measured values. If you have several control chips, you can store one measurement on each chip!



Figure 6.6: Connect power pack for power supply

Step 6

To supply the device with power, you should connect the delivered power pack.

Plug in the connector of the power pack in the designed socket and turn it to left or right until it locks into place.

When you pull on the connector, it will be detached from the socket.



Figure 6.7: Pocket the power pack

Step 7

After connecting the power pack and powering it on you can simply put it in your trouser pocket or other pocket.

Now you should power on the device with the power on/off button.

CHAPTER 7

Operating modes

In this section you will learn more about operating the device. Every operating mode will be explained in a proper subsection.

Every time when you power on the device with the power on/off button the device type and device version will be displayed. After that, you will always see the selection to adjust the background light of the display.

There are 3 different settings for the background light which you can select by using the arrow keys ↓ and ↑:

- **Automatic**
Automatic regulation of the background light. Within the selection menus the display light is always on and during the activated operating modes (during the measurements) the display light will be off.
- **On**
The background light is always activated, which means that the display is always lighted.
- **Off**
The background light is always deactivated, which means the display is always unlighted.

After you have selected the desired option with the keys ↓ and ↑ you should confirm this selection with the button **OK**. Then you will enter into the main menu where you can select all available operating modes.

The device Rover Deluxe offers the following operating modes:

- **1 Metal Detector / Magnetometer**
Depending on the connected probe either the operating mode „Metal Detector“ (with search coil) or „Magnetometer“ (with optional Supersensor) is available.
- **2 Ground Scan**
A graphical measurement for analysis on a computer will be done.
- **3 Transfer Memory To PC**
Measurement values will be sent from the internal memory (control chip) to a PC for analysis.
- **4 Super Sensor Discrimination**
Measured values of the Supersensor for metal analysis will be sent directly to a computer.

The selection of the correct operating modes depends on the planned mission. Normally you should use several operating modes one after another to explore an area. In this way you can obtain as much information as possible from the underground of the scanned area.

The complete menu structure of Rover Deluxe you can find in figure 7.1 as a schematical representation.

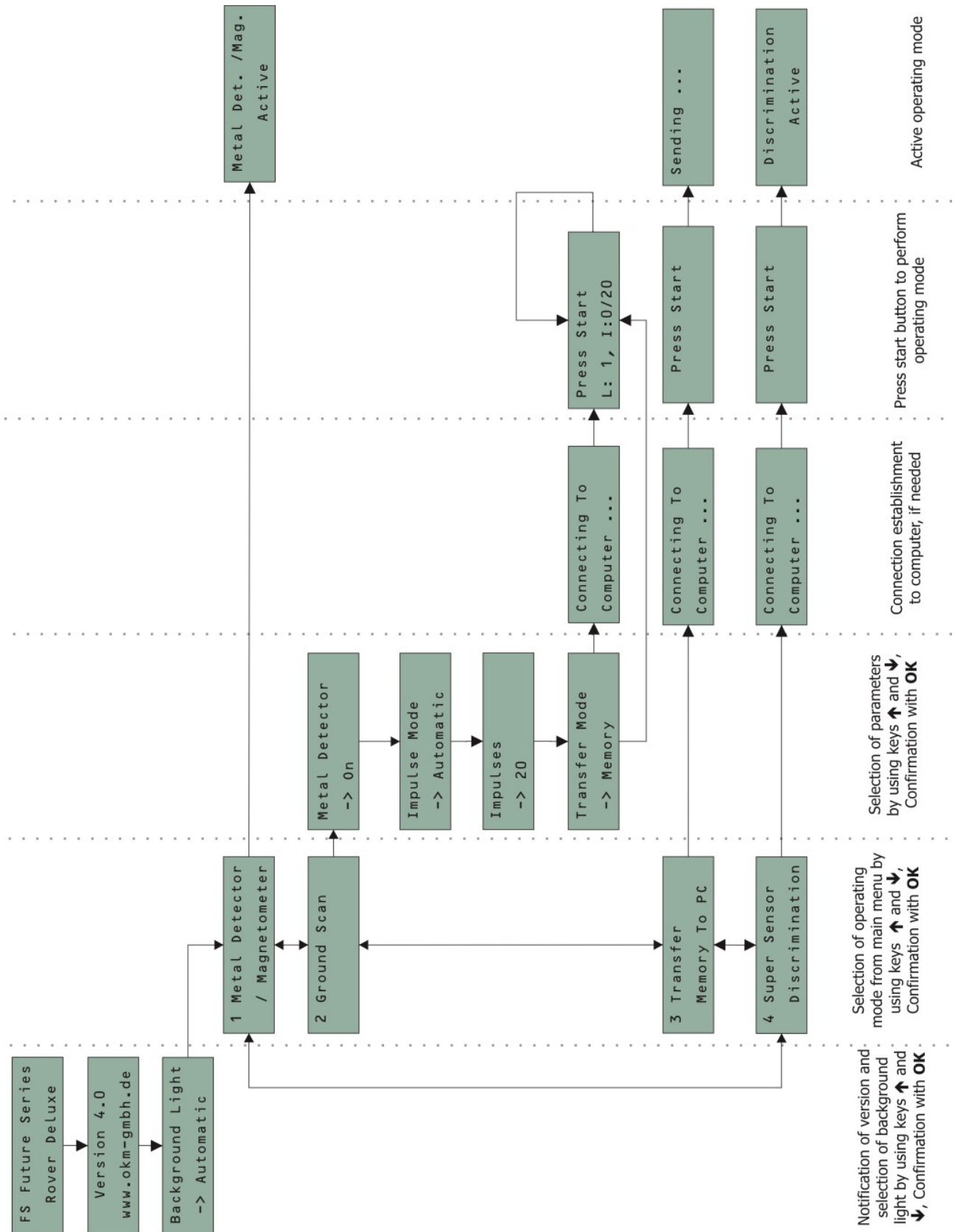


Figure 7.1: Overview about menu structure

7.1 Metal Detector

The operating mode „Metal Detector“ is used to investigate an area in a very quick way. This mode is only an acoustical mode, which does not create any graphical representation. During this operating mode you should handle the Rover Deluxe as shown in figure 7.2.



Figure 7.2: Handling the Rover Deluxe in operating mode "Metal Detector"

Use the Velcro fastener to fix your arm within the armrest. The hinge should be adjusted that the search coil is not bent downwards. Use the regulators DISCRIMINATION and SENSITIVITY to adjust the detector to your personal needs. Detailed information about configuring the discrimination and sensitivity you can read in section 7.1.1 *Sensitivity and metal discrimination on page 37*. After that you power on your device and select the operating mode "Metal Detector" from the main menu. As soon as you confirmed your selection with the **OK** button, a ground balance will be performed and you are ready to start your investigation. Detailed information and important notes about the ground balance you can read in section 7.1.2 *Ground balance on page 38*.



Wrong procedure because the distance to the surface is changing !!!



Right procedure because the search coil is moving evenly over the surface !!!

Figure 7.3: Swinging the search coil in operating mode "Metal Detector"

The search coil must swing back and forth with constant distance to the surface of the ground as shown in figure 7.3 (right picture).

Every time when you press the start button a new ground balance will be performed. If the detector is sounding wrong signals just press the start button again. If this procedure is not solving the sounding problem you have to readjust the settings of the metal discrimination and sensitivity as explained in the next two sections.

7.1.1 Sensitivity and metal discrimination

There are two regulators which are used to configure the settings of the metal detector. In figure 7.4 the control panel for setting up the metal discrimination and sensitivity is displayed.



Figure 7.4: Control panel for operating mode "Metal Detector"

Use the regulator SENSITIVITY to adjust the sensitivity. The more sensitivity the better you can detect small and deep buried objects. If your area has a high level of mineralization a reduced sensitivity is suggested.

The regulator DISCRIMINATION serves to filter certain materials. So it is possible to *exclude* for example worthless iron and steel objects. People who are hunting for treasures and gold are able to exclude even other materials with the help of this metal discrimination feature.

The following table lists all adjustments under normal ground conditions¹.

| Adjustment | Indicated materials |
|------------|--------------------------------------|
| 0 | All metallic objects |
| 3 | Iron, gold, bronze, silver, aluminum |
| 5 | Gold, bronze, silver, aluminum |
| 7 | Silver, aluminum |
| 10 | Aluminum |

Table 1: Standard settings of the metal discrimination

When you adjust the regulator DISCRIMINATION onto gold, the detector reacts besides gold also on bronze, silver and aluminum. To find out if there is really gold in the ground you have to follow the following instructions:

1. Adjust the regulator DISCRIMINATION onto gold and start your soil examination until you reach a place where the detector reacts positive, which means you can hear an acoustical sound signal.
2. Now switch the regulator DISCRIMINATION onto silver and examine the same place again. Following there will be two possibilities:
 - The detector reacts positive! The material under the ground is not gold, but could be silver or aluminum.
 - The detector does not react at all! There is probably golden material in the ground but also bronze is possible.

Please consider that you always should do the ground balance, which is explained in this following section.

7.1.2 Ground balance

A correct ground balance (soil reconciliation) is absolutely necessary that the configured metal discrimination can work properly. If the ground balance is not done correctly the operation of the device and the integrated discriminator cannot be guaranteed.

In the following section you can find a list of all necessary working procedures to do a correct ground balance:

1. Switch on Rover Deluxe.
2. Adjust the regulator SENSITIVITY and the regulator DISCRIMINATION onto the specific material (see previous section).
3. Keep the coil approx. 10 cm above the surface of the ground.
4. Select operating mode „Metal Detector“ and confirm by pressing **OK** button.

¹ These indications concern the use in normal type of soil. In extreme conditions (mineralisation, salt deposits, ...) they can vary from this normal value.

If you hear any acoustic signal from the metal detector after following previous indications, the ground balance has not been finished correctly. Repeat all steps again until there is no acoustic signal from the metal detector.

During the measurement in operating mode „Metal Detector“ you can press the start button to initiate a new ground balance. You also must apply a new ground balance if you change the settings of the regulators.

The following causes can prevent a correct soil reconciliation:

- You are staying above a metallic object.
- You confirm the operating mode "Metal Detector" without holding the search coil directly above the ground.
- During the confirmation of the operating mode "Metal Detector" you are holding the search coil to high and then minimize the distance to the ground.
- You are changing the values of the regulators DISCRIMINATION and SENSITIVITY during or after the ground balance.

Only if you are doing a correct soil reconciliation the functionality of discrimination can be guaranteed!

7.2 Magnetometer

In the operating mode "Magnetometer" you can research the area regarding to ferromagnetic² metals. This mode is only an acoustical mode, which does not create any graphical representation. For using this operating mode you have to connect the Supersensor which is available as option. If the search coil is connected, the operating mode "Metal Detector" is available instead.

Power on the device and select the operating mode "Magnetometer" from the main menu. Press the **OK** button to activate the operating mode. The display now shows the message "*Magnetometer Active*". At this moment no sound should come from the device.



Figure 7.5: Probe should point always to the down and should not be turned

Now you can move slowly forward, backwards and sideways, but should avoid turning the probe. The probe should always point vertical to the ground and should not be turned around its own axis.

As soon as an acoustical signal sounds, the device has detected a possible metal target right under the position of the probe. In this way it is possible to find small metals near the surface like for example nails, screws, wires, seals and similar targets.

You should use the operating mode "Magnetometer", to remove such disturbing metal pieces from the area, you like to scan. The less metals are laying near to the surface, the better will be your result in the operating mode "Ground Scan". You can also find larger metal targets which are located deeper underground. A general norm is: The larger the target, the deeper it can be detected underground!

Also you can use the operating mode "Magnetometer" as a useful pin-pointer during the excavations. If you already have dug out a large hole and do not remember where exactly the detected object was situated, you can simply use the Magnetometer mode, to relocate fast and efficient the target position.

To finish the operating mode "Magnetometer" and return back into the main menu you should press one of the arrow buttons **↓** or **↑**.

² Ferromagnetic metals are for example iron, cobalt and nickel. Also other metals or objects, which include traces of such metals can be detected.

7.3 Ground Scan

The operating mode "Ground Scan" allows a graphical measurement of any area for analysis on a computer. For the measurement you can either use the search coil or the Supersensor. If you are working with the search coil, it should be bent by 90° as shown in figure 7.7.



Figure 7.6: The search coil should be bent while using "Ground Scan"

Power on the device and select the operating mode "Ground Scan" in the main menu by using the arrow keys ↓ and ↑. Press the **OK** button to activate the operating mode. Now you have the option to adjust 4 different parameters. If you are using this operating mode with the Supersensor you can adjust the last three 3 parameters only.

The first parameter configures if the metal discrimination is activated during the whole measurement or not. You can select one of the following values:

- **On**
The metal discrimination of the device stays activated. So you have to adjust the regulators SENSITIVITY and DISCRIMINATION onto the proper values. Those settings must not changed during the whole measurement. Every time you walk over a metal object which is buried near to the surface, the sound of impulse is different in that measure point.
- **Off**
The metal discrimination of the device stays inactive. This setting will be used automatically if the Supersensor is connected. The sound of all impulses is constant all the time.

The second parameter is the impulse mode and offers the following choices:

- **Automatic**
Each measure value will be recorded automatically and continuously without any break.
- **Manual**
One measure value will only be recorded after you have pressed the start button.

The third adjustable parameter is the number of measure points (*Impulses*), which will be recorded for each single scanning path. The following choices can be made:

- **Auto**

The number of measure points of one scanning path will only be defined during the measurement. At the end of the first scanning path the start button should be pressed to save the required number of measure points. This number of measure points will than be used automatically for all following scanning paths. Beginning from the second scanning path the device will stop by itself, when the defined number of measure points has been sent out. If you select "Auto" you are not able to do a direct transfer to a computer. You can only store the measured values in the internal memory of the device, because the exact length of field is not yet selected.

- **10, 20, ..., 200**

Each scanning path consists of the selected number of measure points. At the end of each scanning path the device stops by itself, as soon as the number of measure points is achieved.

In a final step you have to define the type of data transfer (*Transfer Mode*). You should select one of the following choices:

- **Memory**

The measured data will be stored in the internal memory of the device. After finishing the measurement you should transfer the data to a PC by using the operating mode "Transfer Memory To PC". You can only store one measurement at a time in the internal memory. As soon as a new measurement will be recorded, the measured data from the previous measurement will be deleted irrevocable.

- **Computer**

The measured data will be transferred right away to a computer. Therefore a bluetooth connection to a computer will be established before starting the measurement. The option "Computer" is not available if the number of impulses (*Impulses*) has been set on "Auto".

After all parameters has been adjusted the device is ready to start the first scanning path. Beginning from this moment the display will indicate the current number of scanning paths and the current number of measured impulses per scanning path.

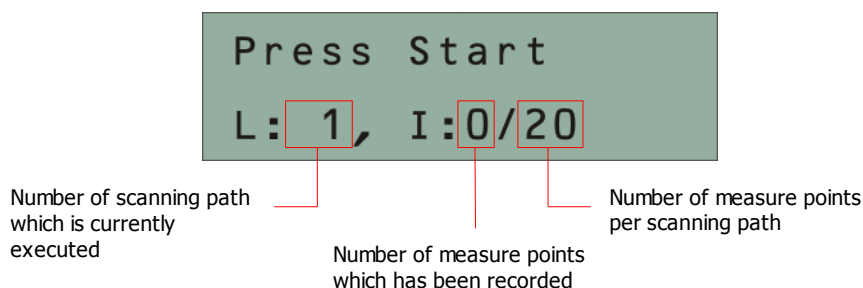


Figure 7.7: Display representation in operating mode "Ground Scan"

The figure 7.7 shows the display which indicates that the first scanning path has begun and no impulse has been measured up to now. In totally there will be 20 measure points per scanning path. The device is waiting for the user to press the start button to begin the measurement recording.

Please go to your start position of the first scanning path and press the start button.

- a) If you have selected the impulse mode "Automatic" just keep going slowly until you have reached the end of the first scanning path. When you already have defined the number of impulses than the device will stop automatically at the end of the line, otherwise you should press the start button when you have reached the end of the first scanning path. Now please go to the start position of the next scanning path and press the start button again. The device will stop automatically by itself at the end of the scanning path.



Figure 7.8: "Zig-Zag" scanning in mode Ground Scan

- b) If you have selected the impulse mode "Manual" you should press the start button to start your measurement. Now you are using the manual scan mode, which means you should release each single measure impulse manually one by one with the start button. The impulses will not be sent out automatically. Now you should do a little step forward and press the start button, to measure the second measure point. The device stops and you should do again a little step forward and press the start button again. Now continue in this way until you have reached the end of the first scanning path. If you already have defined the number of impulses per line, the device will automatically signalize the end of the scanning path, otherwise you should press the **OK** button when you like to finish the first line. Now go to the start position of your next scanning path and press again the start button. Go another step forward and repeat the measurement in the same way like you recorded the first scanning path. The device will now signalize automatically the end of the next scanning path.

Continue to measure all further scanning paths until you have recorded the complete measure area. To finish the operating mode "Ground Scan" and go back to the main menu you simply press one of the arrow keys ↓ or ↑.

7.4 Transfer Memory To PC

By using the operating mode "Transfer Memory To PC" you can transfer measured data from the internal memory of the device to a computer. Therefore it is necessary to plug in the bluetooth dongle into the

computer and to prepare the software to receive the data. As soon as all settings are made in the correct way you can use this operating mode successfully.

Detailed information about the correct setting of the software you can find in the user manual of the software.

Power on the device and select the operating mode "Transfer Memory To PC" from the main menu by using the arrow keys ↓ and ↑. Press the **OK** button to activate the operating mode. The display of the device shows now the message "Connecting To Computer ...". As soon as the device is ready to transfer the data the message "Press Start" appears in the display. Press the start button to transfer all data from the internal memory to the computer. After sending all data the message "Disconnecting From Computer ..." will appear in the display. The operating mode "Transfer Memory To PC" will be finished automatically and you will get back into the main menu.

7.5 Super Sensor Discrimination

In the operating mode "Super Sensor Discrimination" you have the possibility to distinguish between ferromagnetic and non-ferromagnetic metals. This operating mode is only visible in the main menu, when the Supersensor is connected to the device. You cannot use the standard probe in this operating mode. The figure 7.9 shows, how to retain the Supersensor during the measurement.



Figure 7.9: Position of the Supersensor during a measurement

Similar to the operating mode "Magnetometer", the Supersensor should point vertical towards the ground. It should not be turned or pivoted.

Normally this operating mode is used after you have executed a complete measurement in the operating mode "Ground Scan". It is mainly used to analyze the detected object in detail. Due to the analysis of the measurement results in the mode "Ground Scan" you can determine the position of a located object and now know at which place inside the measure area you should research in detail with the Supersensor.

In this operating mode all measured data will be sent directly to a computer. Therefore it is at first necessary to set up the data transfer inside the 3d software. Figure 7.10 shows the configuration dialog of the software "Visualizer 3D". Please be sure to select the operating mode "Discrimination" during the configuration.

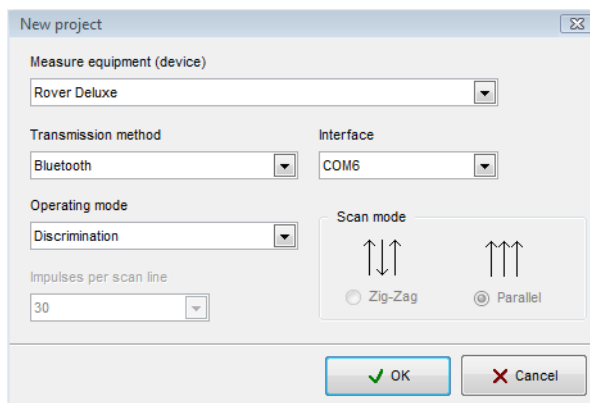
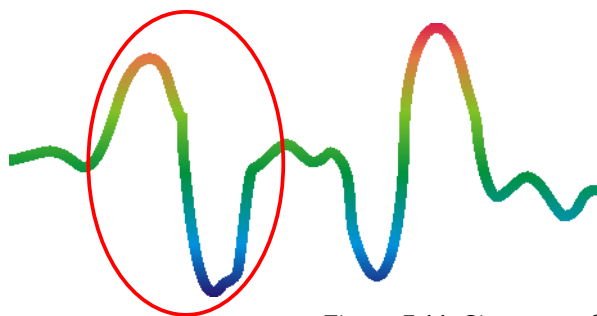


Figure 7.10: Configuration of the 3d software in operating mode "Super Sensor Discrimination"

To adjust the COM port correctly please also read chapter 2 ("Data transfer via bluetooth") on page 13! Click on the button **OK**, when you have adjusted all parameters.

After you have prepared the software for the data transfer, please go near to the detected object, power on the device and select operating mode "Super Sensor Discrimination" from the main menu by using the arrow keys **↓** and **↑**. Press the **OK** button to activate the operating mode.

After the data transfer to computer has been established you can press the start button to start the data transfer and the measurement. Now you can slowly move the Supersensor from one side to another above the possible object. Please try to capture the complete object, which means you should measure beyond the edges of the object. Repeat this measurement a few times to get a clear signature of the object. There are 3 different signatures, from which you can recognize a specific characteristic of any target.



Ferromagnetic metals

Ferromagnetic targets have a positive-negative-signature.

Figure 7.11: Signature of a ferromagnetic metal target

The figure 7.11 shows a typical signature of a ferromagnetic metal like e.g. iron. The signature includes a positive (red) and a negative (blue) amplitude. When looking closely you can see even 2 ferromagnetic signatures. The first signature starts with a positive amplitude and the second signature starts with a negative amplitude. The order is not important, it depends on the direction of movement of the Supersensor. If you keep moving the probe from one side to another, these 2 signatures will change continuously.

Take care to move the Supersensor slowly and equal above the ground and above a detected object to get a clear signature.

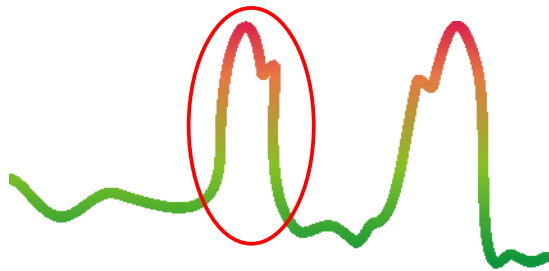


Figure 7.12: Signature of a non-ferromagnetic metal target

The figure 7.12 represents a signature of a non-ferrous target. You can recognize that there is only a positive amplitude (red). Additionally to the main amplitude there is another small peak, which is typically for precious metals. Also here the order of amplitude and the small peak is not important and depends on the scan direction.

Non-ferromagnetic metals

Non-ferrous targets have a pure positive signature.

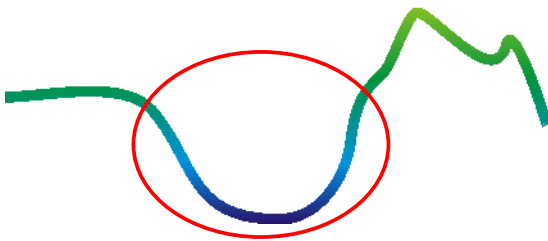


Figure 7.13: Signature of a non-metallic target

The last of the typical signatures is represented in figure 7.13. It is the signature of all non-metallic targets and structures. These can be voids, tunnels or buried plastic pipes or boxes. You can recognize that there is only a negative amplitude (blue).

Non-metallic targets

All non-metallic items have a pure negative signature.

To quit the operating mode "Super Sensor Discrimination" and get back into the main menu you just have to press one of the arrow keys ↓ or ↑.

CHAPTER 8

Field procedure

This chapter gives practical instructions about the general procedure of a measurement in an area. The different measurement methods and procedures will be explained in detail.

8.1 General scanning procedure

In general every measurement always starts on the bottom right corner of your scan area. Starting from this point, you should walk scanning path by scanning path, whereby every following path is situated on the left side of its previous path. During walking these lines, the measurement values will be recorded and depending on the selected operating mode either transferred directly to a computer or saved into the memory of the device.

The device stops at the end of each finished scanning path, so that the user can find the starting position of the following path. In this way, all paths will be registered and the area will be measured.

Figure 8.1 shows all 4 possible starting positions and the corresponding first scanning path. Depending on the composition of your terrain you can determine the optimal starting point for your measurement by yourself.

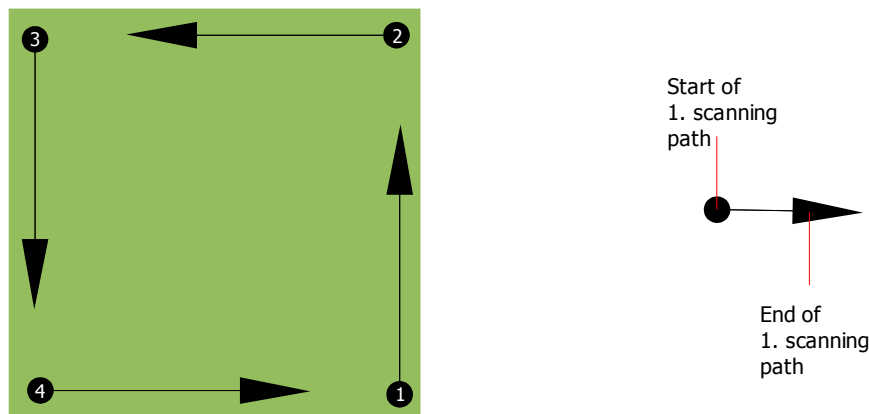


Figure 8.1: Starting position of a scan area

The scanning paths may be referred as to as "Zig-Zag" or "Parallel" traverses. Also the number of impulses (measure points), which are recorded during one scanning path can be adjusted individually depending on the size of your scan area (length of scanning path).

8.1.1 Scan Mode

There are two general techniques to survey an area with Rover Deluxe:

- **Zig-Zag**
The starting position of two scanning paths next to each other is on the opposite side of the measured area. You will record data on your scanning path and on the return path as well.
- **Parallel**
The starting position of two scanning paths is always on the same side of the measured area. You will only record data in one way and in one direction, while you should return and walk back to the starting position of the next scanning path without recording data.

Figure 8.2 represents both techniques schematically.

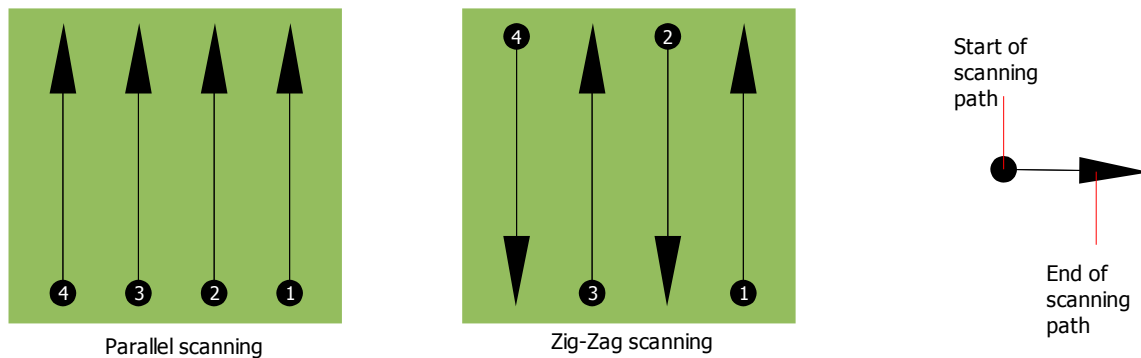


Figure 8.2: Scan modes to measure an area

During the measurement in scan mode "Parallel" you will start on the bottom right corner of your measure area (point ❶) to walk and record a scanning path towards the right upper corner of the measure area. After recording the first scanning path, you should walk back to the starting point of scanning path 2 (point ❷), to start there the second scanning path. In this way all other paths will be scanned, until you have reached the left side of your measure area.

During the measurement in scan mode "Zig-Zag" you will start also from the bottom right side of your measure area (point ❶) to walk and record a scanning path towards the right upper corner of the measure area. Different from the parallel measurement, you should continue recording data while walking back the second scanning path. So you go to the starting point of the second scanning path (point ❷) and scan in the opposite direction. In this way, all other paths will be scanned in the scan mode "Zig-Zag" until you have reached the left side of your measure area.

The distance between the scanning paths should be constantly during one measurement but can vary from measure area to measure area. If you mostly look for smaller targets than you should also select a small distance between the paths! A standard rule is: The smaller the distance between the paths, the more accurate will be your scan result!

8.1.2 Regulation of the number of impulses per scanning path

It is possible to select the number of impulses before starting the measurement or selecting the automatic mode ("Auto") to adjust the number of measure points after finishing the first scanning path.

When the number of measure points has been configured, the device will stop automatically when this number has been reached and waits for the start of the new scanning path.

In the automatic mode you should stop the measurement of the first scanning path by yourself, by pressing the start button, as soon as you have reached the end of the first scanning path. This effective amount of measure points will be used for all further scanning paths of this measurement. Starting from the second scanning path, the device now stops automatically after the assumed number of impulses has been reached.

Keep in mind the number of impulses which you have recorded per scanning path. This amount should be entered later in the software program, when transferring the data to a PC, to receive correctly all measured data from your measuring instrument!

There is no special rule for selecting the right number of impulses. But there are different aspects which has to be considered. These are for example

- the length of your measured area and
- the size of the objects you are searching for.

A preferable distance between two impulses is about 15 cm to 20 cm. The smaller the distance between two impulses is, the more exactly the graphical representation will be. If you are looking for small objects you have to select a smaller distance, for big objects you can increase the distance between the impulses.

Figure 8.3 shows the effects of the distance and the number of impulses per scanning path for some objects.

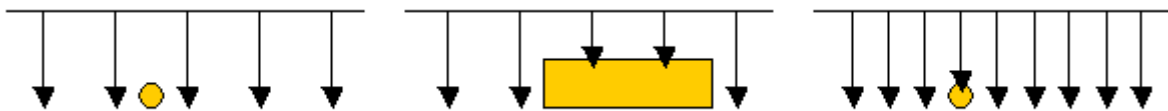


Figure 8.3: Effects of changing the number of impulses and their distance

Figure 8.4 shows the difference between very few impulses (left side) and much more impulses (right side) on the same length of scanning path. Therefore the second record (right side) shows much more details and also smaller objects can be seen.

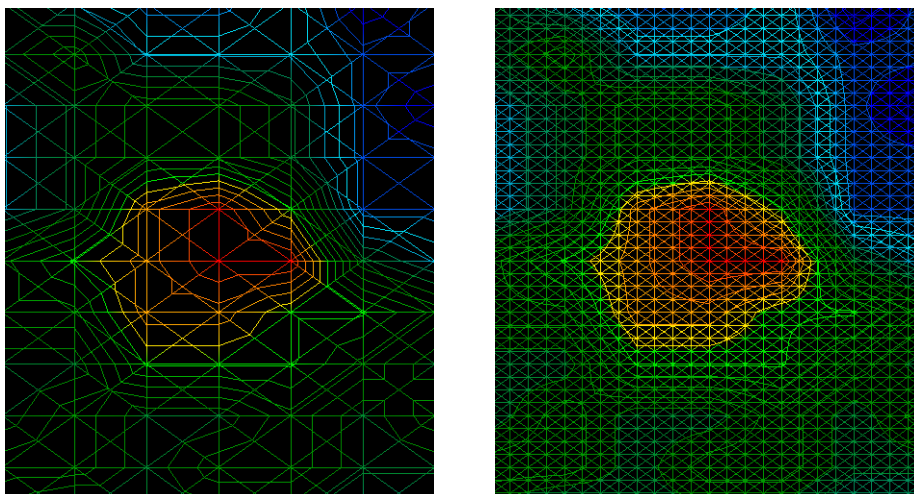


Figure 8.4: Comparison of low and high number of impulses

Do not hesitate to record more measurements with different numbers of impulses. For example you can scan a large area before doing a second detailed precision measurement. Especially for the search of

bigger objects you can proceed like this. With this manner you can measure a larger area very quickly and afterwards you can record only subsections of interest.

When walking the scanning paths you should not only take care of the number of impulses, you also need to take care of your walking speed. Every scanning path should be measured with the same speed, like the previous scanning paths.

Figure 8.5 shows what can happen, if you use different walking speeds in each scanning path.

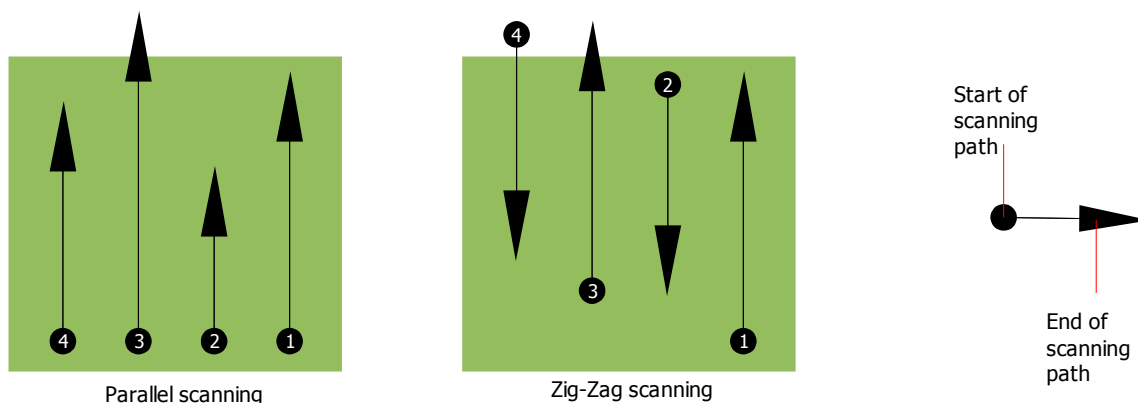


Figure 8.5: Different walking speeds during scanning

Using a different walking speed in the scanning paths, will cause displacements in the scanning path. Thereby it can happen that some places inside your scan area are not measured at all or other unmeant places outside of your scan area will be included. Later when the recorded data will be transferred to the software and combined to a 3d image, there might be unmeant falsifications.

In general, the following rule is valid: The smaller and equally you are walking while measuring each scanning path, the smaller will be the distance between the measure points and the more accurate will be your scan result!

8.2 Special advices for the field procedure

There are some aspects which you should take care of during the measurement. In principle the obtained 3d graphic can be only as good as the measurement you have recorded. A false measurement can create falsified graphics.

Before you start with a measurement in the field, you should think of what you are looking for and if the selected area is suitable. Measuring without any plan will not give acceptable results. Please consider the following advice:

- What do you like to locate (graves, tunnel, buried objects, ...)? This question has direct effects on the realization of a measurement. If you look for large targets, the distance between the single measure points and scanning paths can be larger, as if you are looking for small targets.
- Inform yourself about the area, where you are searching. Does it make sense to detect here? Are there historical references which confirms your speculation? What type of soil is on this area?

Are there good conditions for data recording? Is it allowed to search at this place (e.g. private property)?

- Your first measurement in an unknown area has to be large enough to get representative values. All further control measurements should be adjusted individually.
- What is the form of the object you search? If you are looking for an angular metal box, the identified object in your graphic should have a form according to this.
- To get exact values concerning the depth measurement, the object has to be in the center of the graphic, which means it has to be framed by normal reference values (normal ground). If the object is on the side of the graphic and not totally visible a correct depth measurement is not possible and also measurement of size and form are limited. In this case, repeat the measurement and change the position of your scan area, to receive an optimal position of the anomaly inside of the graphic.
- There should not be more than one object in a graphic. This will influence the exactness of depth measurement. It is useful to scan partial areas over such targets.
- You should do at least two control scans to get sure about your results. So you also can recognize and isolate mineralized deposits.

8.2.1 Orientation of probe

During one measurement the probe should have always the same distance to the ground. Generally we recommend a distance of about 10 – 15 cm from the surface of the ground.

If there are some obstacles like stones, wood or high grass inside of your scan area than you should start the measurement right from the beginning in a higher distance of the probe to the ground. In such circumstances you can measure in a distance of e.g. 50 cm above the ground. Important is that you keep this distance during the complete measurement. In any case you should avoid to move up and down the probe!

Another important aspect is the physical orientation of the probe. During the scan mode "Parallel" the orientation of the probe does not change because you always measure in the same direction. During the scan mode "Zig-Zag" the orientation of the probe will be turned about 180° at the end of each scanning path (if you change your position together with the device, to walk back forwards and continue scanning).

This change of orientation can influence negatively the scan result. Even if the Rover Deluxe processes an integrated auto reversal electronics it can happen that the obtained graphic can include red or blue stripes. In such a case you should repeat the measurement either in the scan mode "Parallel" or in the scan mode "Zig-Zag" while avoiding a turn at the end of each scanning path and instead walking backwards.

8.2.2 Parallel or Zig-Zag?

For skilled users of Rover Deluxe both scan modes are suitable. According to experience the best graphics has been received in the mode "Parallel", because always the same direction of scanning is used and the walking speed can be coordinated in the most adequate way.

Specially in uneven territories like mountain sides, acclivities or other inclined layers the parallel mode is preferred.

8.2.3 Manual or automatic impulse mode?

Large even surfaces can be measured in the automatic mode. The manual impulse mode is mostly used in difficult territories or if the measurement result should be much accurate.

In terrains with difficult access like cliffy mountain sides, slippery surfaces or overgrown areas, it is wise to use the manual impulse mode. Because each impulse will be released manually, you have enough time to position the probe in the correct way and record the measured value. In this way, you can also measure accurately previously marked dots of a predefined grid.

CHAPTER 9

Tutorial

This chapter gives a detailed step-by-step procedure, which explains the process of a measurement by means of some selected examples.

9.1 Automatic measurement in Zig-Zag mode

Figure 9.1 represents a typical measure area which should be scanned with the Rover Deluxe. The red frame marks the borders of the measure area. For this example we are using the following parameters:

- **Metal Detector:** "On"
Metal discrimination should be active during the measurement.
- **Impulse Mode:** "Automatic"
Automatic impulse mode, which records measure values (impulses) of a scanning path without any interruption.
- **Impulses:** "Auto"
Automatic determination of the impulses, which means the number of impulses will be defined during the first scanning path.
- **Transfer Mode:** "Memory"
Storage of measured data in the internal memory of the device. After finishing the measurement the data has to be transferred to the computer by using the operating mode "Transfer Memory To PC".
- **Scan Mode:** "Zig-Zag"
The measure area is even and easy to access, that is why we have selected the scan mode "Zig-Zag".



Figure 9.1: Measure area for a survey in mode "Ground Scan"

Now go to the start position ❶ of your measure area and power on the device by pressing the power on/off button. Put on the headphones and power them on, so you can hear the acoustical signal of the sending out of impulses. The display shows the selection menu of the background light. Simply press the **OK** button to activate the automatic regulation for the background light. Now you can see the main menu where you can select the operating mode "Metal Detector". Press one time on the button ↓, to select the operating mode "Ground Scan". Confirm your selected operating mode by pressing the **OK** button. At this point you should activate the metal discrimination. The default setting is "On" and already set. Confirm this selection by pressing the **OK** button. Use the regulators SENSITIVITY and DISCRIMINATION to adjust the metal discrimination and sensitivity. Do not change these settings during the whole measurement!

Now you can see the selection menu of the impulse mode (*Impulse Mode*). It is already set on "Automatic". Confirm this selection by pressing the **OK** button.

The next parameter is the number of impulses (*Impulses*). The default setting is "20". Press two times the arrow key ↓, to select "Auto". Confirm your selection by pressing the **OK** button.

The last parameter is the method of transfer (*Transfer Mode*). The default setting is "Memory". Confirm your selection by pressing the **OK** button.

The device is now ready to start the first scanning path. The display shows the message "Press Start, L:1, I:0/?". The question mark "?" shows that the number of impulses per scanning path has not been defined yet. As soon as you press the start button the measure values will be recorded continuously. You will hear the acoustical signals via the integrated speakers or the headphones. On the basis of these acoustic signals you can coordinate your walking speed. After pressing the start button you should walk slowly and equally forward to point ❷ of the measure area and press again the start button so that you do not hear any more impulses. The device is now in stand-by position. On the display you can now read the automatic defined number of impulses per scanning path. For example there can be the following message written in the display "Press Start, L:2, I:0/25". Here 25 impulses has been defined.

Now you should go to the start position of your second scanning path (point ❸). Press the start button and walk with the same speed like the first scanning path to the end of your second scanning path (point ❹). This time it is not necessary to press again the start button at the end of the scanning path. The device will stop automatically when it has recorded the same number of impulses like in the first scanning path.

Continue the measurement with the next few scanning paths until you have scanned the complete measure area in the scan mode "Zig-Zag". When you have reached the end of the final scanning path, press one of the arrow keys ↓ or ↑, to finish the measurement and go back into the main menu.

When leaving the operating mode "Ground Scan" you should keep in mind the number of impulses which you have used per scanning path! This value you should enter when transferring the data to the software!

In this moment the recorded data of your measure area is saved in the internal memory of your device and should now be transferred to a computer for evaluation.

9.2 Transfer internal memory to computer

The data of your last measurement are saved in the internal memory of the device. Before you can evaluate these measurement values graphically you should transfer them to a computer. The following section explains how you can transfer the saved measure values from the internal memory to the delivered software "Visualizer 3D".

9.2.1 Prepare software "Visualizer 3D"

Before you can transfer any measured data you should prepare the "Visualizer 3D" software for a data reception. Plug in the bluetooth dongle into a free USB port of your computer and start the program "Visualizer 3D".

When the software is open, click on the menu entry **File** → **New** and set up the parameters according to your previously recorded measurement!

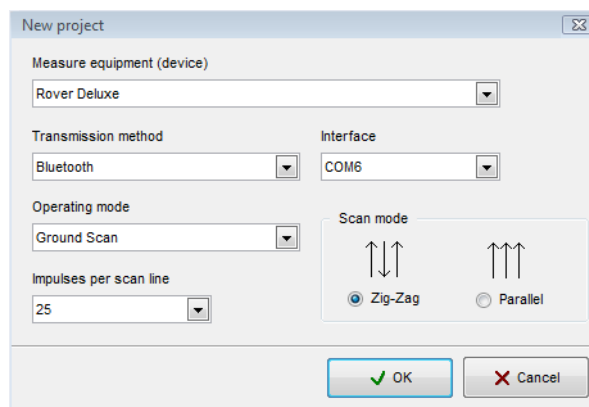


Figure 9.2: Preparation of a new data transfer in "Visualizer 3D"

Select your measure instrument "Rover Deluxe" from the list.

As transmission method you should select "Bluetooth" and at the entry "Interface" define the correct COM port at which the bluetooth dongle has been installed. Please also read the chapter 2 ("Data transfer via bluetooth") on page 13! If you are using a preconfigured laptop you can find the correct number of the used COM port on the attached sticker.

As operating mode you should select "Ground Scan" and enter in the space "impulses per scan line" the recorded number of measure points per scanning path. In our example we have used 25 impulses. Now you just have to select the scan mode, so that the computer can receive the data correctly. Therefore you should mark the entry "Zig-Zag" and click on the button **OK**.

9.2.2 Establish bluetooth connection and transfer data

After having prepared the software "Visualizer 3D" to receive data, you should establish a bluetooth connection between the Rover Deluxe and the computer. Power on the measure instrument and select the operating mode "Transfer Memory To PC" with the arrow keys ↓ and ↑. Activate the selected operating mode with the **OK** button and wait until the device establishes a connection to the computer.

When you are connecting the device the first time to the computer you should enter a password. The password is **OKM** (written in capital letters!). Please read also the chapter 2 ("Data transfer via bluetooth") on page 13!

When the bluetooth connection is established successfully (the bluetooth icon in the task bar will be green), press the start button on your measure instrument.

Now all measured data will be transferred and a graphical representation will appear in the "Visualizer 3D" software. Now click inside the software on **File** → **Stop**, to finish the data transfer to the software.

9.3 Manual measurement in parallel mode

In figure 9.3 the measured area is represented again. In our second example it should be scanned with the following parameters:

- **Metal Detector:** "Off"
The measurement will be performed without any metal discrimination activated.
- **Impulse Mode:** "Manual"
Manual impulse mode, where the measure values (impulses) of a scanning path should be released manually. The device waits after each measure point for the user to release the next impulse.
- **Impulses:** "30"
Predefined fixed number of impulses, which means that the number of impulses should be exactly 30 within the 1. scanning path and all following scanning paths.
- **Transfer Mode:** "Computer"
Direct transfer of measured data to a computer. Before starting the measurement a connection between device and computer via bluetooth should be established.
- **Scan Mode:** "Parallel"
The measure area is even and easy to walk but it is also possible to select the scan mode "Parallel".



Figure 9.3: Measure area for a survey in mode "Ground Scan"

Because all measured values will be transferred directly to the computer while scanning, you should at first prepare the software to receive data.

9.3.1 Prepare "Visualizer 3D" software

Plug in the bluetooth dongle into a free USB port of your computer and start the "Visualizer 3D" software.

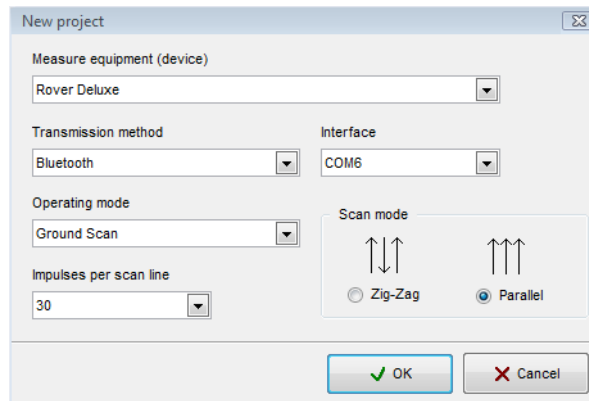


Figure 9.4: Preparation of a new data transfer in "Visualizer 3D"

When the software is open, click on the menu entry **File** → **New** and set up the parameters according to your planned measurement!

Select your measure instrument "Rover Deluxe" from the list.

As transmission method you should select "Bluetooth" and at the entry "Interface" define the correct COM port at which the bluetooth dongle has been installed. Please also read the chapter 2 ("Data transfer via bluetooth") on page 13! If you are using a preconfigured laptop you can find the correct number of COM port on the attached sticker.

As operating mode you should select "Ground Scan" and enter in the space "impulses per scan line" the number of measure points which you plan to use for each scanning path. In our example we will use 30 impulses. Now you just have to select the scan mode, so that the computer can receive the data correctly. Therefore you should mark the entry "Parallel" and click on the button **OK**.

9.3.2 Establish bluetooth connection

After having prepared the software "Visualizer 3D" to receive data, you should establish a bluetooth connection between the Rover Deluxe and the computer. Power on the measure instrument with the power on/off button. The display will indicate the selection menu for setting up the background lighting. Simply press on the **OK** button to activate the automatic regulation of the lighting. After that you will enter into the main menu where the first operating mode "*Metal Detector*" is visible. Press one time on the arrow key ↓, to select the operating mode "Ground Scan". Confirm the selected operating mode by pressing the **OK** button. At this point you have the possibility to configure the integrated metal discrimination. The default setting is "On" and already set. Therefore press one time on the arrow key ↓, to switch metal discrimination to "Off". Confirm your selection by pressing the **OK** button.

Now you entered into the selection menu *Impulse Mode*. The default setting is "Automatic". Press the arrow key ↓, one time to change to "Manual". Confirm the setting by pressing the **OK** button.

As the next parameter you should select the number of impulses (*Impulses*). The default setting is "20". Press one time the arrow key ↑, to select "30". Confirm this setting by pressing the **OK** button.

The last parameter is the method of data transmission (*Transfer Mode*). The default setting is "Memory". Press one time the arrow key ↓, to change to "Computer". Confirm this selection by pressing the **OK** button.

The display of the device shows now the message "*Connecting To Computer ...*". When you are connecting the device the first time to the computer you should enter a password. The password is **OKM** (written in capital letters!). Please read also the chapter 2 ("Data transfer via bluetooth") on page 13!

As soon as the bluetooth connection has been established successfully (bluetooth icon in task bar shines green) you can start with the measurement.

9.3.3 Performing a measurement

Go to the starting position ❶ of your measure area, put on the headphones and power them on to hear the acoustic signal of the sending out of the impulses. The display shows the message "*Press Start, L:1, I:0/30*". As soon as you press the start button you will hear a short impulse signal.

The display now shows the message "*Press Start, L:1, I:1/30*", which means that 1 of 30 impulses has been measured. Now do a small step forwards in direction of point ❷ and press again the start button to measure the 2nd impulse. You will hear again a short signal tone via the internal speakers or the headphones. Repeat this procedure until the device indicates you the end of the scanning path and the display shows the message "*Press Start, L:2, I:0/30*".

Now go to the start position of your second scanning path (point ❸). Press the start button and measure the second scanning path in the same way like the first scanning path. Continue your measurement for all other scanning paths until you have scanned the complete area in the scan mode "Parallel". When you have reached the end of the final scanning path press one of the arrow buttons ↓ or ↑, to finish the complete measurement and return into the main menu.

While measuring the ground all data has been transferred at the same time to the computer and a graphical representation has been created inside the "Visualizer 3D" software. Now click on **File** → **Stop**, inside the software program to finish the data transfer to computer.