

FS Future Serie®

Rover Deluxe

User's manual

Any information contained in these operating instructions may be changed without prior notice.

OKM does not make any warranty for this document. This also applies without limitation to implied assurances of merchantability and fitness for a specific purpose. OKM does not assume any responsibility for errors in this manual or for any incidental or consequential damage or loss associated with the delivery, exploitation or usage of this material.

This documentation is available „*as presented*“ and without any kind of warranty. In no circumstances OKM takes responsibility for lost profits, usage or data loss, interruption of business activities or all kind of other indirectly damages, which developed because of errors in this documentation.

This instruction manual and all other stored media, which are delivered with this package should only be used for this product. Program copies are allowed only for security- and safety purposes. The resale of these programs, in original or changed form, is absolutely forbidden.

This manual may not be copied, duplicated or translated into another language, neither in part nor completely, over the copyright matters without the prior written consent of OKM.

Copyright ©2002 – 2007 OKM Ortungstechnik GmbH. All rights reserved.

Contents

1	Preface	7
2	Important Notes	8
2.1	General Notes	8
2.2	Possible Health Hazards	8
2.3	Surrounding Area	8
2.4	Voltage	9
2.5	Data safety	9
3	Technical Specifications	10
3.1	Control Unit	10
3.2	Data Transmission	10
3.3	Computer, Minimum Requirements	11
4	Scope of Delivery	12
5	Assembly	14
6	Installation of Radio Transmission (Toshiba)	17
6.1	Install Software & Drivers	17
6.2	Software Configuration	20
6.3	Configure connection	21
7	Installation of Radio Transmission (Conceptronic)	22
7.1	Windows XP, 2000, ME und 98SE	22
7.1.1	Install Software & Drivers	22
7.1.2	Install Bluetooth-Dongle	26
7.1.3	Configure connection	29
7.2	Windows Vista	30
7.2.1	Install Bluetooth-Dongle	30
7.2.2	Establish connection	33
8	Control Elements	35
8.1	Front View	35
8.2	Back View	36
8.3	Touchpad for Menu Navigation	37
9	Operating Modes	38
9.1	Activate Detector	38
9.2	DiscScan Area Transfer To PC	39
9.3	DiscScan Area Store In Memory	40
9.4	Manual Scan Store In Memory	40
9.5	DiscScan '10' Transfer To PC	41
9.6	Transfer To PC	41

10 Discrimination	42
10.1 Adjust the Discriminator	42
10.2 Soil Reconciliation	43
11 Analysis and Evaluation of Measurements	44
11.1 Metal or Mineralisation	44
11.2 General Procedure	46
11.3 Regulation of the Number of Impulses	47
12 Danger of Explosion during Excavation	49
13 Tutorial	50
13.1 Searching a Metal Box	50
13.1.1 Preparing a measurement	50
13.1.2 Doing a measurement	51
13.1.3 Analysing the measuring results	51
14 Maintenance and Services	53

List of Figures

1	Scope of delivery	13
2	Connection detector coil and probe	14
3	Connection probe and control unit	14
4	Connection of control chip and antenna	15
5	Connection of joystick and headphones	15
6	Connection of USB Dongle	16
7	Bluetooth-Installation	17
8	Bluetooth-Installation, Select Language	17
9	Bluetooth-Installation, Start	18
10	Bluetooth-Installation, Licence Agreement	18
11	Bluetooth-Installation, Setup	19
12	Bluetooth-Installation, Finish	19
13	Bluetooth-Installation, Reboot	20
14	Determining the given COM-Port	20
15	21
16	Bluetooth-Installation	22
17	Bluetooth-Installation, Select Language	22
18	Bluetooth-Installation, Start	23
19	Bluetooth-Installation, Licence Agreement	23
20	Bluetooth-Installation, Destination Folder	24
21	Bluetooth-Installation, Setup	24
22	Bluetooth-Installation, Finish	25
23	Bluetooth-Installation, Reboot	25
24	Bluetooth-Installation, Plug in the Bluetooth-Dongle	26
25	Bluetooth-Installation, Set up Bluetooth-Dongle	26
26	Bluetooth-Installation, Bluetooth-Dongle has been installed	26
27	Find out the assigned COM-Port	27
28	Find out the assigned COM-Port	27
29	Find out the assigned COM-Port	28
30	USB-Connection, Enter PIN-Code	29
31	USB-Connection, Confirm Access	29
32	USB-Connection, Connection established	29
33	Windows Vista, Install Bluetooth-Dongle	30
34	Windows Vista, Set up Bluetooth-Dongle	30
35	Windows Vista, Configurate Bluetooth-Dongle	30
36	Windows Vista, Verify Bluetooth settings	31
37	Windows Vista, Configurate serial COM-Port	31
38	Windows Vista, Configurate serial COM-Port	32
39	Windows Vista, Allow access	33
40	Windows Vista, Set up Bluetooth-Dongle	33
41	Windows Vista, Finish connection assistant	34
42	Windows Vista, List of Bluetooth devices	34
43	Front view	35
44	Back view	36
45	Display	37

46	Graphical representation of a measurement with activated discrimination	39
47	Graphical representation of a measurement without discrimination	40
48	Adjustment of discrimination	42
49	Comparison of object and mineral	45
50	Given manner	46
51	First measurement of an area	47
52	Control scan, Variant A	47
53	Control scan, Variant B	47
54	Effect of number of impulses and their distance	48
55	Comparison of small and high number of impulses	48
56	Possible graphical representation of a measurement	52

List of Tables

1	Technical Specifications (Control Unit)	10
2	Technical Specifications (Data Transmission)	10
3	Technical Specifications (Computer, Minimum Requirements)	11
4	Scope of delivery	12
5	Standard adjustment of the discrimination	42

1 Preface

Dear customer,

in the first instance we want to thank you that you made your decision on a product of OKM Ortungstechnik GmbH.

With the Rover Deluxe you purchased a product which is based on a electromagnetic pulse method which can be used to locate anomalies in the target area. Thus the device is able to detect natural features such as formations of strata, cavities, groundwater level as well as seplchers or buried objects such as pipes, tanks, boxes or suchlike.

The Rover Deluxe is able to locate, to document and to analyse buried objects with different structures, without making necessary any excavation. Particularly in areas next to the surface there are many advantages to geoelectric, seismic and magnetic procedures and it is further more a usefull complement to these methods. The Rover Deluxe has a facile and flexible handling and provides fast and easy reproducible results.

With our team of specialists we guarantee that our products are under recurrent control. Our specialists try to implement new developments in terms of further quality improvements for you.

Of course by selling our products we cannot guarantee that you really make a find during your research. The recognition of hidden objects and structures depends on a hugh number of factors - like you know. Determining factors are the dielectricity constant of the ground, the grade of mineralisation and the dimensions of an object relating to its depth. Specially in very wet soil, clay and sand with high conductivity of the ground, recording of the measured results can be falsified strongly.

With this product you purchased a device which stood the tests in regular operation like all other products of us. If you are interested in where our devices have gone into action please visit our homepage.

For our company it is necessary that we protect our developments within the framework of existing legislation to a patent or trademark registration. Therewith we offer you a higher warranty while using our products.

Please take your time consecutively, read this user's manual and familiarize yourself with the utilisation and operation of this Rover Deluxe.

2 Important Notes

Please read these operating instructions carefully and closely before using *Rover Deluxe* and its accessories! These instructions give information on how to use the device and point out potential sources of danger.

Rover Deluxe and its accessories serves for documentation and analysis of detect objects deposited and changes performed in the ground. The registered data of the ground structure will be transmitted to a PC for visual representation in a special software program using the components we offer. Any additional notes relating to this has to be observed. Please read attentively the manual according to the software you are using!

2.1 General Notes

Being an electronic device, *Rover Deluxe* has to be treated with the caution and care necessary when such devices are used. Any failure to observe the safety precautions given or any use for purposes other than the ones it is conceived for may result in a damage or destruction of the processing unit and connected components.

The device will get destroyed if it is opened improperly.

2.2 Possible Health Hazards

If used properly the device normally does not pose any health hazards. According to current scientific knowledge, the high-frequency signals are not harmful to the human body on account of their low power.

2.3 Surrounding Area

Having been transferred from a cold to a warmer place, the device should not be operated immediately afterwards. Any condensation, which may have formed, might cause the device to get destroyed. Avoid strong magnetic fields, which may occur in places such as near machines or loudspeakers, and avoid using a detector within a radius of 50 meters.

Metallic objects on the ground such as cans, doses, catches, nails, screw or others can influence negatively your measurement and have to be removed. Also you have to remove keys, telephones, chains and rings and all other magnetic and metallic objects from yourself.

2.4 Voltage

The power supply should not be outside the indicated range of values. Use only chargers, batteries and rechargeable batteries which are included in the scope of delivery.

Never use the 230 Volt mains supply.

2.5 Data safety

There can be errors in the process of data collection if

- the range of the sender module is been exceeded,
- the power supply of the device is to low,
- the cables you are using are to long,
- other electronic devices sends out disturbances or
- atmospherics occurs (lightnings, ...).

3 Technical Specifications

The following technical indications are medial values. During operation small variations are quite possible.

3.1 Control Unit

Dimensions (H x W x D)	430mm x 150mm x 260mm
Weight	about 3kg
Power Supply	12 VDC
Processor	Motorola, 4 MHz
Data Memory (internal)	about 1.500 measured values
Operating Temperature	0°C – 50°C
Storage Temperature	-20°C – 60°C
Air Humidity	5% – 75%
Waterproof	No

Table 1: Technical Specifications (Control Unit)

3.2 Data Transmission

Technology	Bluetooth
Frequency	2.4 – 2.4835 GHz
Maximal Data Transmission Rate	1 Mbps
Receiving Sensitivity	-85 dBm
Maximal Range	about 100 meters

Table 2: Technical Specifications (Data Transmission)

3.3 Computer, Minimum Requirements

The computer is not part of the scope of delivery. The indicated values should help you for a correct selection of a suitable computer for analysis of your measured results.

CD-ROM Drive	minimum 4x
COM-Port (Data Transmission)	USB
Free Memory	minimum 20 MB
Working Memory (RAM)	minimum 128 MB
Graphic Card	minimum 64 MB, OpenGL-compatible
Operating System	Windows 98SE, Me, 2000, XP

Table 3: Technical Specifications (Computer, Minimum Requirements)

4 Scope of Delivery

In the following section you can find all standard equipment. The scope of delivery can be different in some circumstances because of some optional accessories which should not be included in the basic equipment.

- 1 Control Unit
- 1 Probe with Metal Detector
- 1 USB Bluetooth Dongle
- 1 USB Setup CD
- 1 External Power Supply
- 1 Charger for External Power Supply
- 1 Cable for External Power Supply
- 1 3D Software (Standard)
- 1 Joystick
- 1 Control Chip
- 1 Headphones
- 1 Manual
- 2 Carrying case

Table 4: Scope of delivery

Beware that pictures in this manual could be different to delivered parts.



Figure 1: Scope of delivery

5 Assembly

In this section is explained how to assemble the device and how to prepare a measurement.

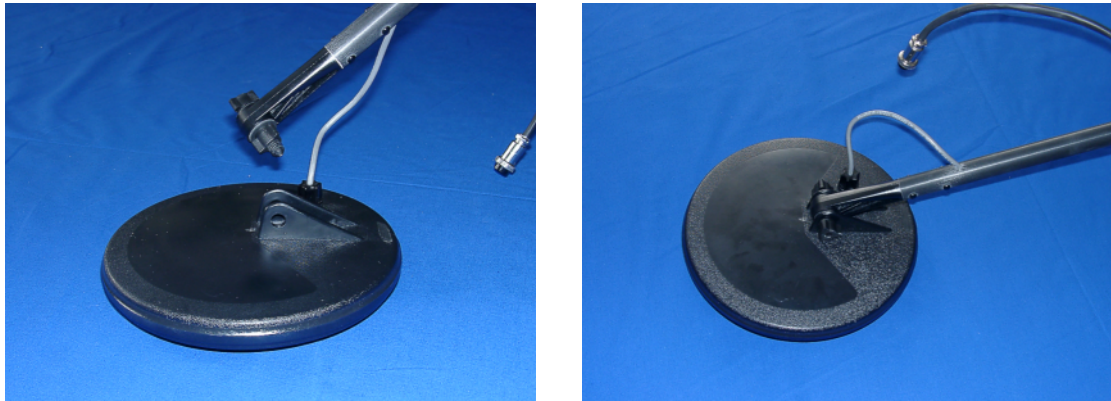


Figure 2: Connection detector coil and probe

In figure 2 you can see how to build up the probe. Therefore you have to connect the detector coil and the probe with the screw which is attached to the probe.

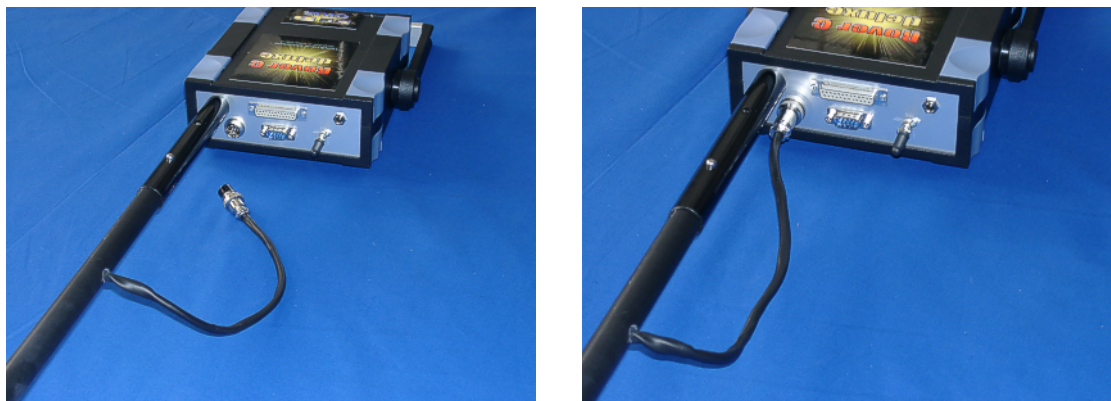


Figure 3: Connection probe and control unit

In figure 3 you can see how to connect the probe with the control unit. Therefore you have to put the detector coil in the linkage of the device and connect the probe to the control unit by plugging the probe cable into the intended socket of the main unit.

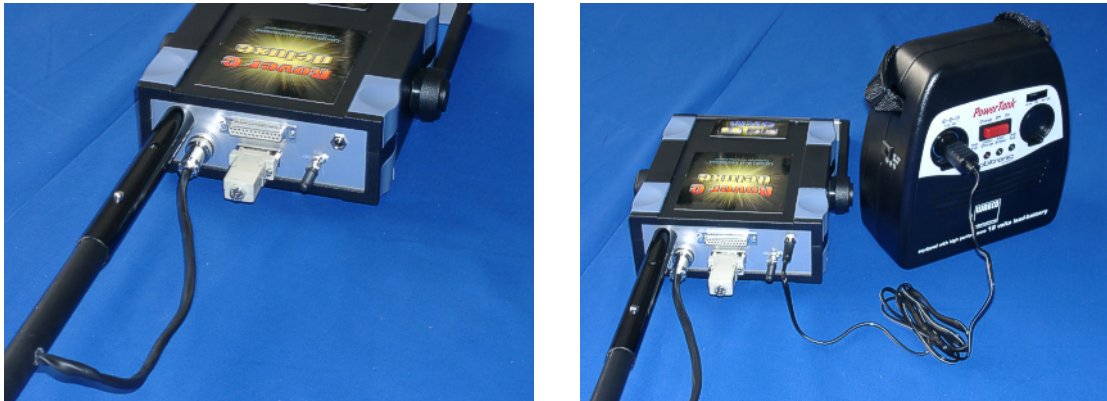


Figure 4: Connection of control chip and antenna

Figure 4 shows how you stick on the control chip and how to connect the external power supply. The control chip just has to be plugged into the intended connection on the back side of the device. Without this control chip the device cannot operate. If you connect the external power supply with the control unit you have to use the 12V output for the correct cable connection.



Figure 5: Connection of joystick and headphones

Figure 5 indicates which connection has to be used for joystick and headphones. Please take care not to exchange both elements, otherwise the device can get damaged.



Figure 6: Connection of USB Dongle

Figure 6 shows how the Bluetooth Dongle has to be connected to the USB-Port of the computer. Further information of the correct use and installation of the USB-driver you can find in section ?? on page ??.

6 Installation of Radio Transmission (Toshiba)

This section describes the installation of the USB Bluetooth Dongle. Consider that the represented figures not necessarily agree with the current version of your operating system or the version of your USB installation.

The instructions in this chapter are only valid for the Toshiba usb-drivers. If you are using the Conceptronic usb-drivers, please read chapter 7.

6.1 Install Software & Drivers

Now it is time to install the software and driver on your system. Therefore you have to insert your Bluetooth CD into the CD ROM drive of your computer. If the CD does not start automatically, please double click on Desktop and then double click on the symbol of your CD ROM drive. With a further double click on file `setup.exe` you start the installation.



Figure 7: Bluetooth-Installation

The first window of your installation will open. Click here on the entry *Toshiba Driver* and follow the instructions on the screen.

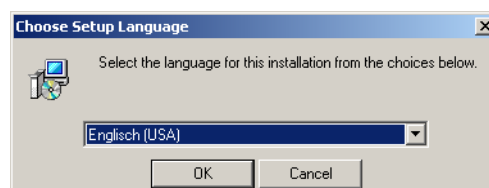


Figure 8: Bluetooth-Installation, Select Language

First there is a possibility to select the language of the installation. Click on *OK*, to change to the installation dialog from figure 9.

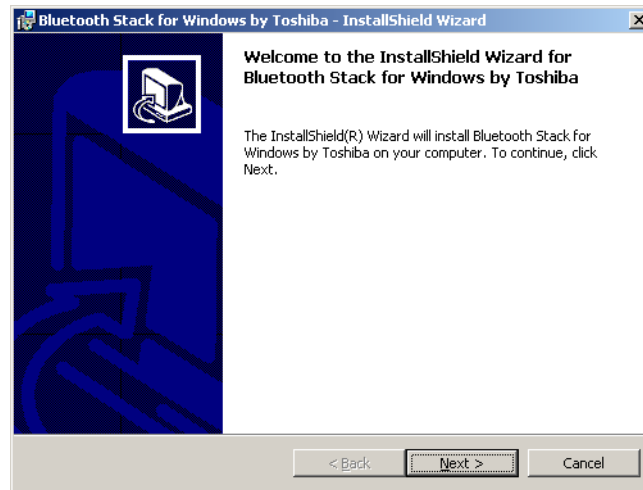


Figure 9: Bluetooth-Installation, Start

Now simply click on *Next*, to continue the installation. A dialog like in figure 10 appears on your screen.



Figure 10: Bluetooth-Installation, Licence Agreement

Select the option *I accept the terms in the licence agreement* and confirm it with a click on *Next*.

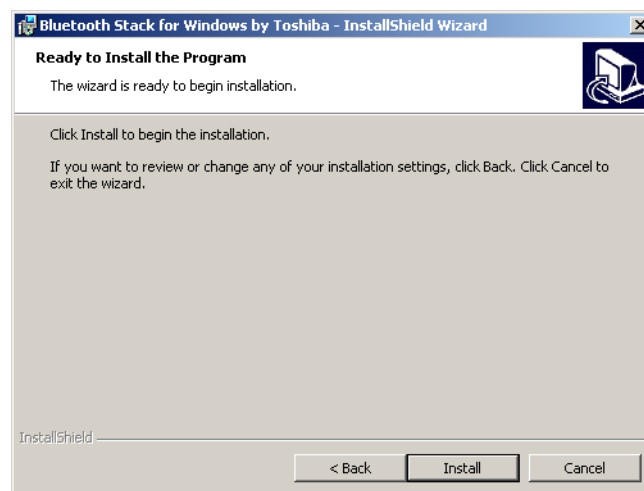


Figure 11: Bluetooth-Installation, Setup

Click now on the button *Install*, to start to copy the files. Afterwards you will be referred that the installation process can take about 15 minutes. Answer this question with a click on *OK*. If you did not connect the Bluetooth Dongle until now you will be asked to do so during the installation of the driver. Now wait until the installation is finished and all files has been transferred to your computer.

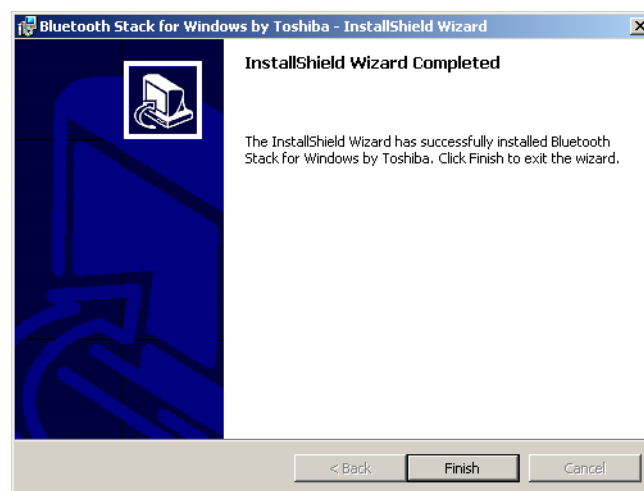


Figure 12: Bluetooth-Installation, Finish

As soon as the installation is finished, a dialog as in figure 12 appears. Click on the button *Finish*.

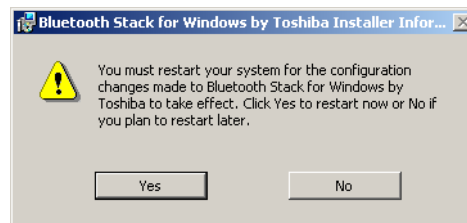


Figure 13: Bluetooth-Installation, Reboot

To terminate the installation you have to reboot your computer. A message like in figure 13 will appear. Confirm it with a click on the button *Yes*.

6.2 Software Configuration

To find out on which COM-Port your Bluetooth connection is been installed, click on **Start** → **Settings** → **Control Panel**. Double click the entry *Bluetooth Local COM*. A dialog will open like it is represented in figure 14.

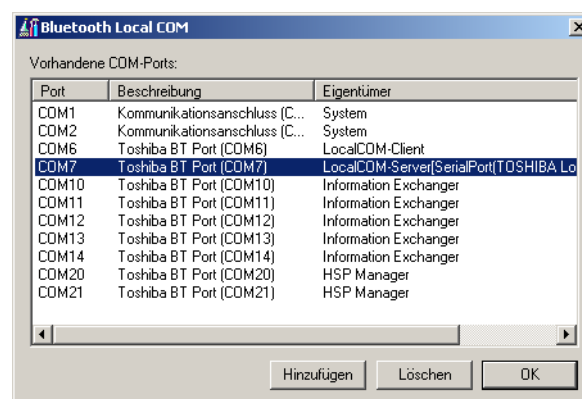


Figure 14: Determining the given COM-Port

There you can find the entry *LocalCOM-Server[SerialPort(TOSHIBA LocalCOM)]*, which indicates on which COM-Port your Bluetooth Dongle has been installed. This COM-Port you always have to indicate for the data transmission to the software program.

6.3 Configure connection

After installation and configuration of your Bluetooth connection you should test if the data transmission from your measuring instrument to the computer is working correctly.

Be sure that the USB Dongle is attached to your computer. Take your measuring instrument and power on the device. Select a operating mode, which includes the direct data transmission to PC. Additional information on direct data transmission to PC you can find in section 9 on page 38.

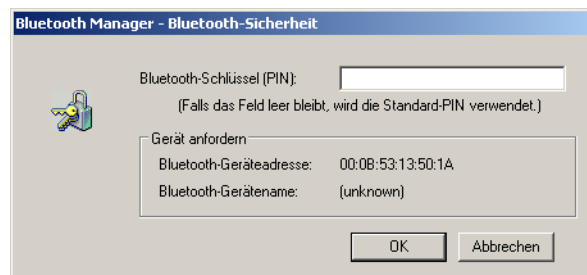


Figure 15:

As soon as you confirm your selected operating mode the device will try to get a radio connection to the computer. If this connection is successful a message like in figure 15 appears.

In this dialog you have to enter OKM. It is necessary to write in capital letters!

7 Installation of Radio Transmission (Conceptronic)

This section describes the installation of the USB Bluetooth Dongle. Consider that the represented figures not necessarily agree with the current version of your operating system or the version of your USB installation.

The instructions in this chapter are only valid for the Conceptronic usb-drivers. If you are using the Toshiba usb-drivers, please read chapter 6.

7.1 Windows XP, 2000, ME und 98SE

7.1.1 Install Software & Drivers

Now it is time to install the software and driver on your system. Therefore you have to insert your Bluetooth CD into the CD ROM drive of your computer. If the CD does not start automatically, please double click on Desktop and then double click on the symbol of your CD ROM drive. With a further double click on file `autorun.exe` you start the installation.

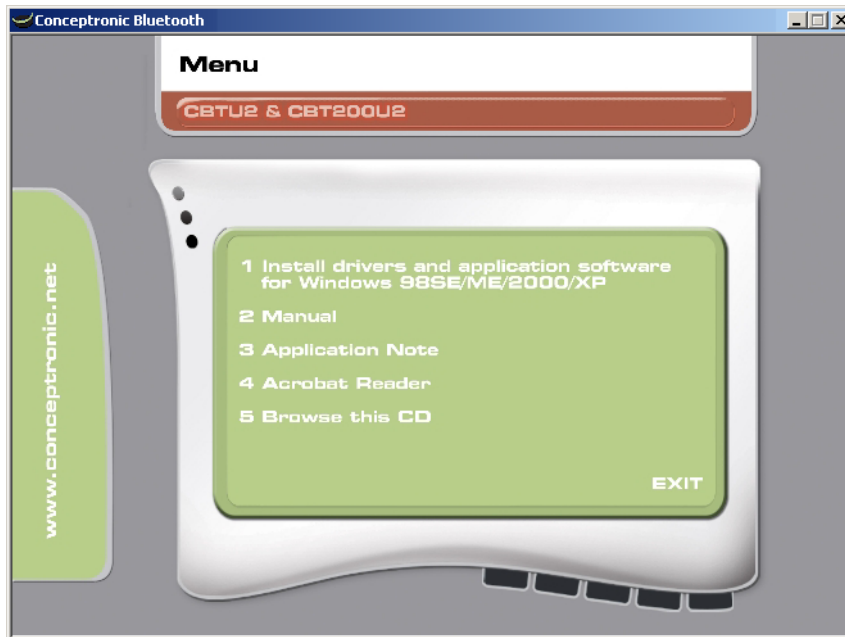


Figure 16: Bluetooth-Installation

The first window of your installation will open. Click here on the entry *1 Install drivers and application software* and follow the instructions on the screen.

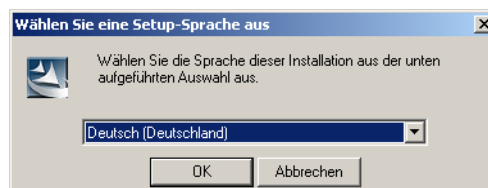


Figure 17: Bluetooth-Installation, Select Language

First there is a possibility to select the language of the installation. Click on *OK*, to change to the installation dialog from figure 18.

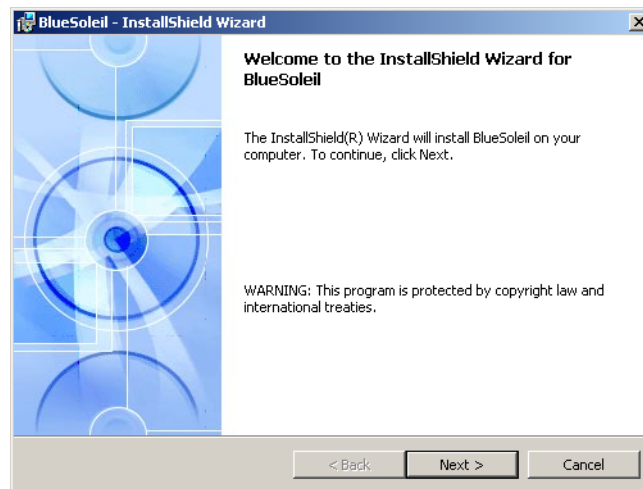


Figure 18: Bluetooth-Installation, Start

Now simply click on *Next*, to continue the installation. A dialog like in figure 19 appears on your screen.



Figure 19: Bluetooth-Installation, Licence Agreement

Select the option *I accept the terms in the licence agreement* and confirm it with a click on *Next*.

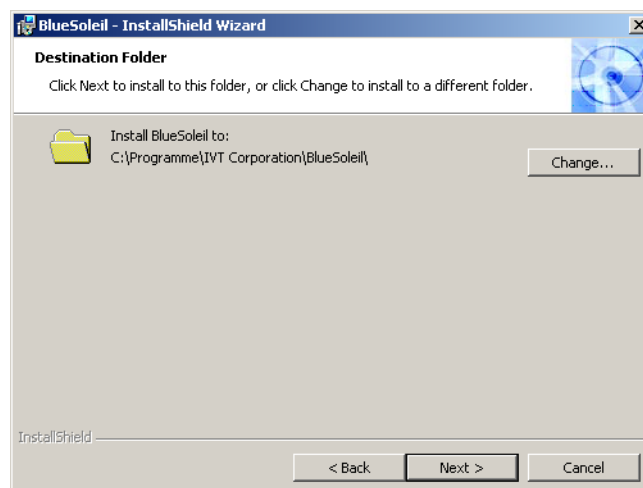


Figure 20: Bluetooth-Installation, Destination Folder

Inside the dialog from figure 20 you have the possibility to select another destination folder. Normally there is no changing necessary. Click only on the button *Next*.

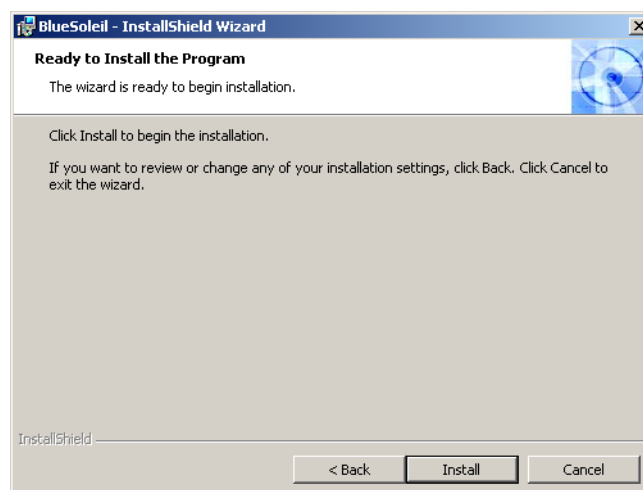


Figure 21: Bluetooth-Installation, Setup

Click now on the button *Install*, to start to copy the files. Now wait until the installation is finished and all files has been transferred to your computer.

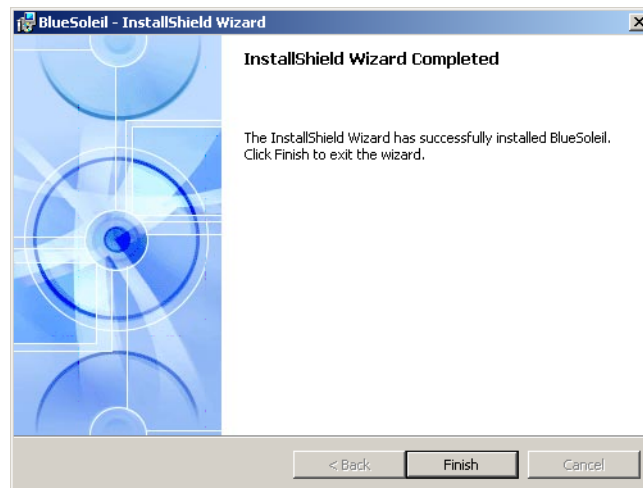


Figure 22: Bluetooth-Installation, Finish

As soon as the installation is finished, a dialog as in figure 22 appears. Click on the button *Finish*.

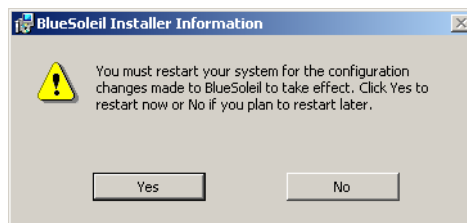


Figure 23: Bluetooth-Installation, Reboot

To terminate the installation you have to reboot your computer. A message like in figure 23 will appear. Confirm it with a click on the button *Yes*.

7.1.2 Install Bluetooth-Dongle

After you have reboot the computer the message from figure 24 appears on your screen. Now you have to plug in the Bluetooth-Dongle into your computer.

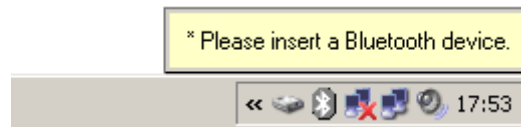


Figure 24: Bluetooth-Installation, Plug in the Bluetooth-Dongle

Now your computer tries to install automatically the Bluetooth-Dongle. Wait until a dialog window like in figure 25 appears on your screen. Click on the button *OK*.



Figure 25: Bluetooth-Installation, Set up Bluetooth-Dongle

After a successful set up of the Bluetooth-Dongle the message from figure 26 appears on your screen.



Figure 26: Bluetooth-Installation, Bluetooth-Dongle has been installed

To find out on which COM-Port the Bluetooth connection has been installed you have to click with the right mouse button on the Bluetooth symbol in the task bar. A dialog window like in figure 27 will appear.

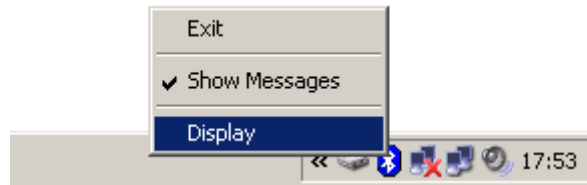


Figure 27: Find out the assigned COM-Port

If you click here on the entry *Display* a window like represented in figure 28 will open. Select in the menu *View* the option *Service Window*.

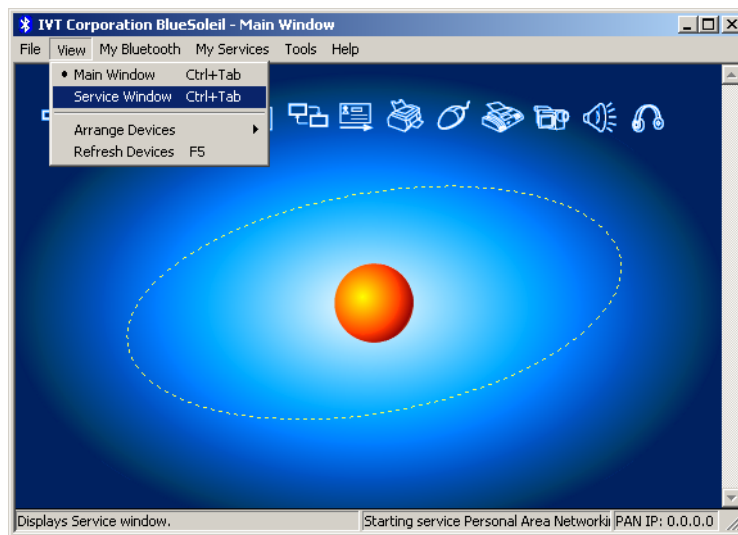


Figure 28: Find out the assigned COM-Port

An image like in figure 29 is represented. Behind the indication *Serial Port A* you can read the number of the assigned COM-Port. In this figure it is *COM7*, this can be different on your computer!

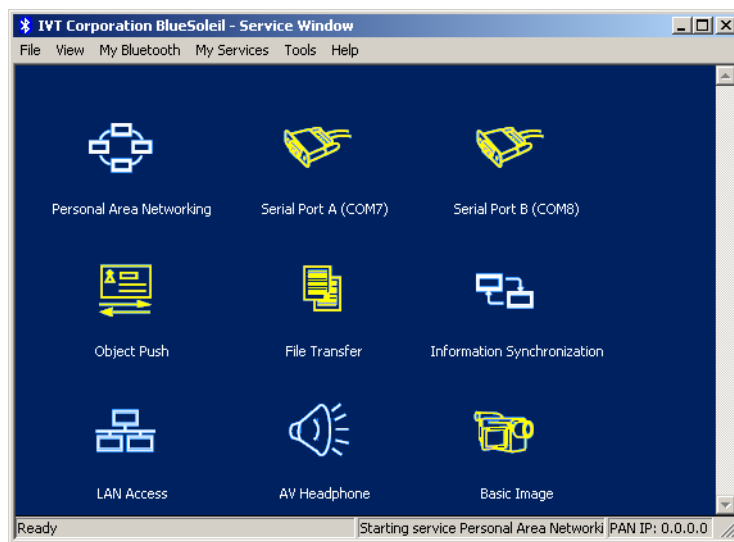


Figure 29: Find out the assigned COM-Port

7.1.3 Configure connection

After installation and configuration of your Bluetooth connection you should test if the data transmission from your measuring instrument to the computer is working correctly.

Be sure that the USB Dongle is attached to your computer. Take your measuring instrument and power on the device. Select a operating mode, which includes the direct data transmission to PC. Additional information on direct data transmission to PC you can find in section 9 on page 38.

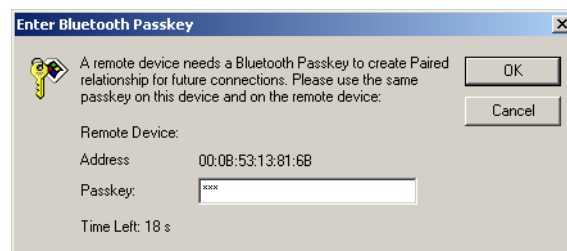


Figure 30: USB-Connection, Enter PIN-Code

As soon as you confirm your selected operating mode the device will try to get a radio connection to the computer. If this connection is successful a message like in figure 30 appears. In this dialog you have to enter OKM. It is necessary to write in capital letters! Confirm this entry by a click on the button *OK*.



Figure 31: USB-Connection, Confirm Access

Another window will open where you mark the entry *Always allow this device to access this service* and confirm this entry by a click on *Yes*.

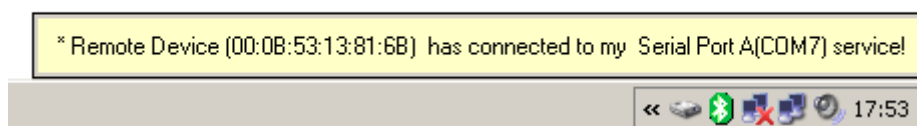


Figure 32: USB-Connection, Connection established

The message from figure 32 indicates that the connection is established. Now you have set up successfully your Bluetooth connection.

7.2 Windows Vista

For Windows Vista there are no additional drivers necessary. The basic functions are already provided by the operating system. To install the Bluetooth-Dongle on your Windows Vista system, please read the instructions in the following subsection!

7.2.1 Install Bluetooth-Dongle

Power on your computer and wait until Windows Vista is completely booted. After you signed up for your Windows Vista system plug in the Bluetooth-Dongle into a free USB slot. The message from figure 33 appears on your screen.

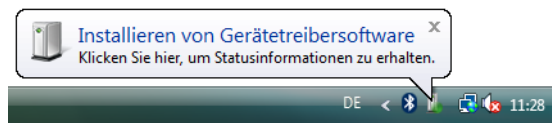


Figure 33: Windows Vista, Install Bluetooth-Dongle

Wait a little moment until the installation of the Bluetooth-Dongle is completed successfully and the message from figure 34 appears on your computer screen.

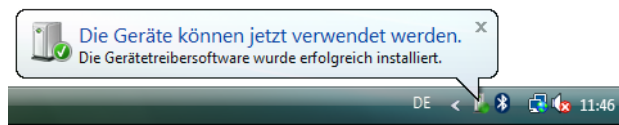



Figure 34: Windows Vista, Set up Bluetooth-Dongle

To use the Bluetooth-Dongle with your device, you have to apply a serial COM-Port. Therefore please click with the right mouse button on the Bluetooth symbol  on the down right side of your computer screen! A dialog similar to figure 35 will open. Click with the left mouse button on the entry *Open Bluetooth settings*.

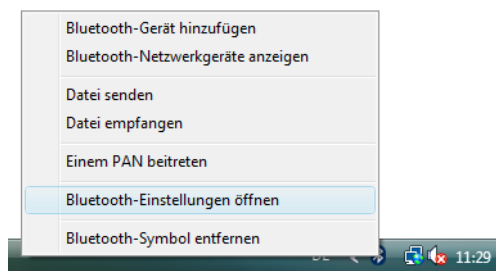


Figure 35: Windows Vista, Configure Bluetooth-Dongle

The dialog window from figure 36 will open. Click with the left mouse button on the tab *Options* and compare the settings of your computer with those from the figure. After that please click on the tab *COM-Ports*.

To transfer the measured data from your device to the computer, you have to establish now the serial COM-Port. The figure 36 (right side) shows the relevant dialog window. Click with the

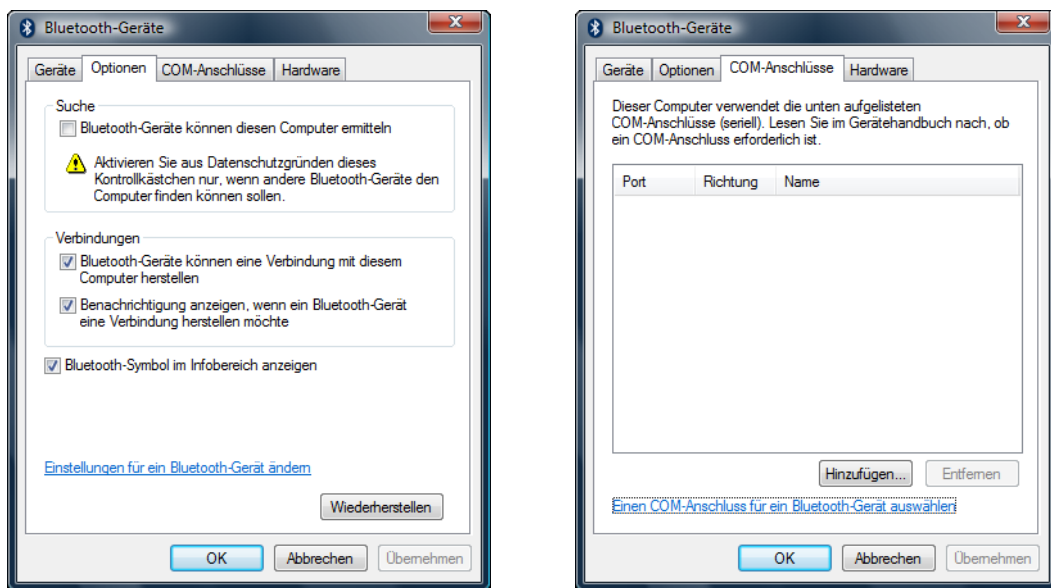


Figure 36: Windows Vista, Verify Bluetooth settings

left mouse button on the button *Add*. Another dialog window like represented in figure 37 will open.

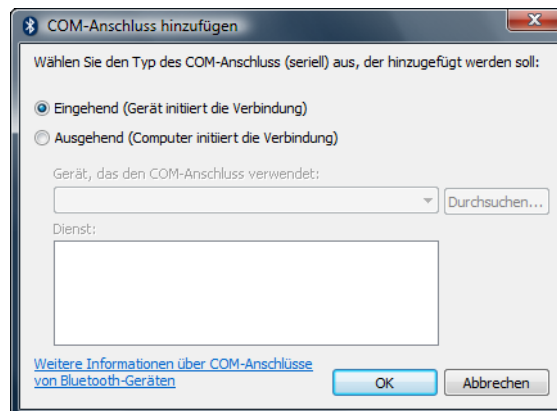


Figure 37: Windows Vista, Configure serial COM-Port

In this dialog you only have to select option *Incoming (Device initiate connection)* and confirm your selection by a click on the button *OK*. Automatically a serial COM-Port will be created and a Port referred. In this tutorial the Port *COM3* has been referred. This Port *COM3* has to be entered later in the software, to transfer measured data to your computer.

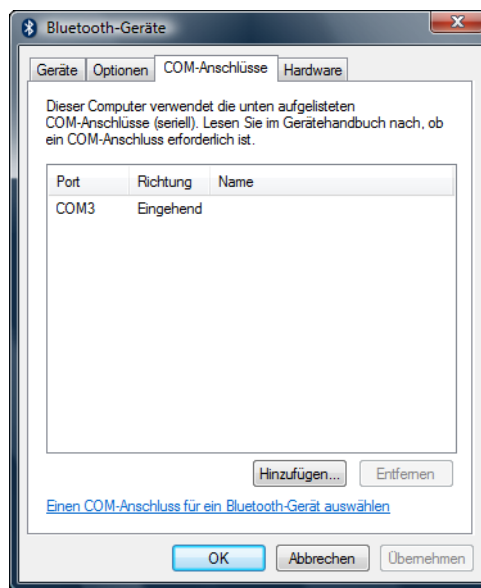


Figure 38: Windows Vista, Configure serial COM-Port

Again, in figure 38 the allocation of the serial COM-Port *COM3* is represented. The installation of the Bluetooth-Dongle is now completed. The next step is to establish a test connection, to control the connectivity.

7.2.2 Establish connection

Be sure that the Bluetooth-Dongle is plugged into your computer. Now take your measuring instrument and power it on. Select an operating mode which supports the direct data transfer to your PC. Detailed information you can find in section 9 on page 38. As soon as you confirmed this function on your device, a radio connection to your pc will be established. If it is successful the dialog from figure 39 appears.

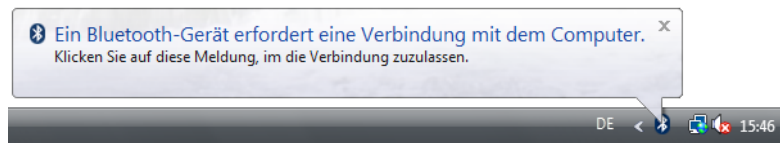


Figure 39: Windows Vista, Allow access

Click with the left mouse button inside this message to enter the PIN-Code. A dialog like in figure 40 appears on your computer screen.

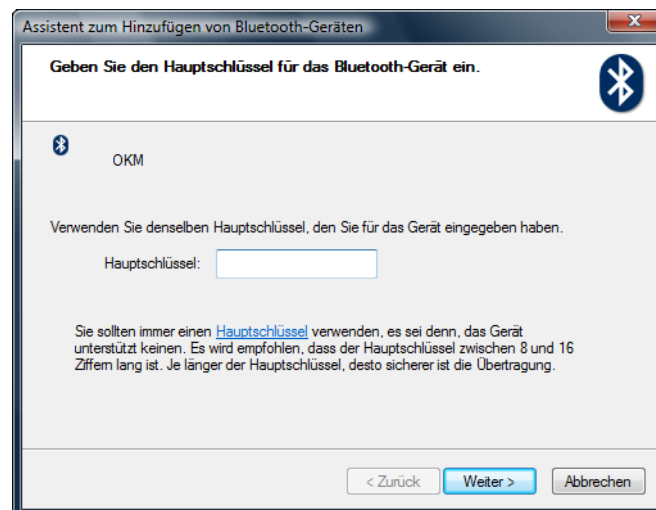


Figure 40: Windows Vista, Set up Bluetooth-Dongle

There please enter the PIN-Code OKM. Take care to use capital letters! Confirm the entry by a click on the button *Next*.

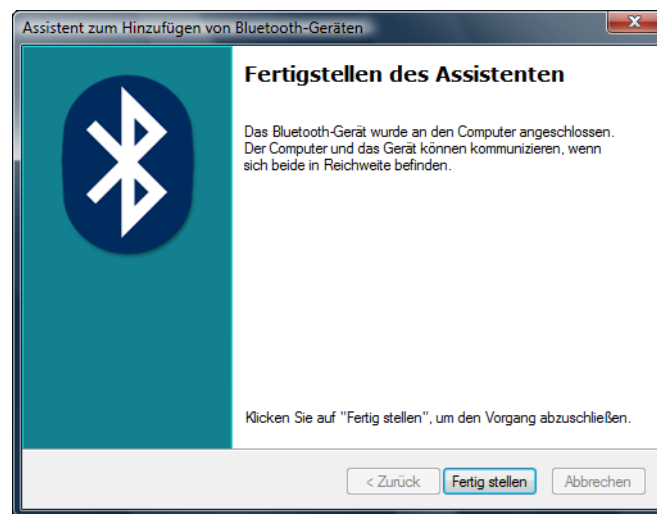


Figure 41: Windows Vista, Finish connection assistant

After a connection has been established the dialog from figure 41 appears. Just click on the button *Finish* to finish the connection assistant.

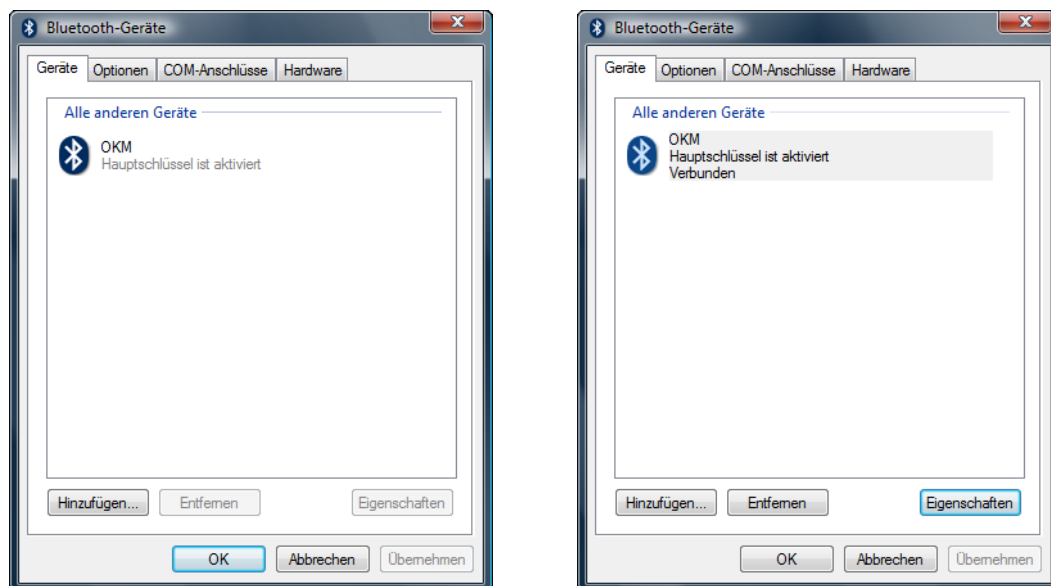


Figure 42: Windows Vista, List of Bluetooth devices

To find out the current status of your Bluetooth-Dongle click with the right mouse button on the Bluetooth symbol inside the down right corner of your screen. In the following menu (see figure 35 on page 30) please click with the left mouse button on the entry *Open Bluetooth settings*. A dialog like in figure 42 shows all existing devices. As soon as one of these devices has established a connection it will be indicated by the supplement *Connected*.

8 Control Elements

In this section you will learn more about the fundamental use of all control elements for this measuring instrument. All connections, inputs and outputs are explained in detail.

8.1 Front View

The figure 43 shows the front side of the control unit.

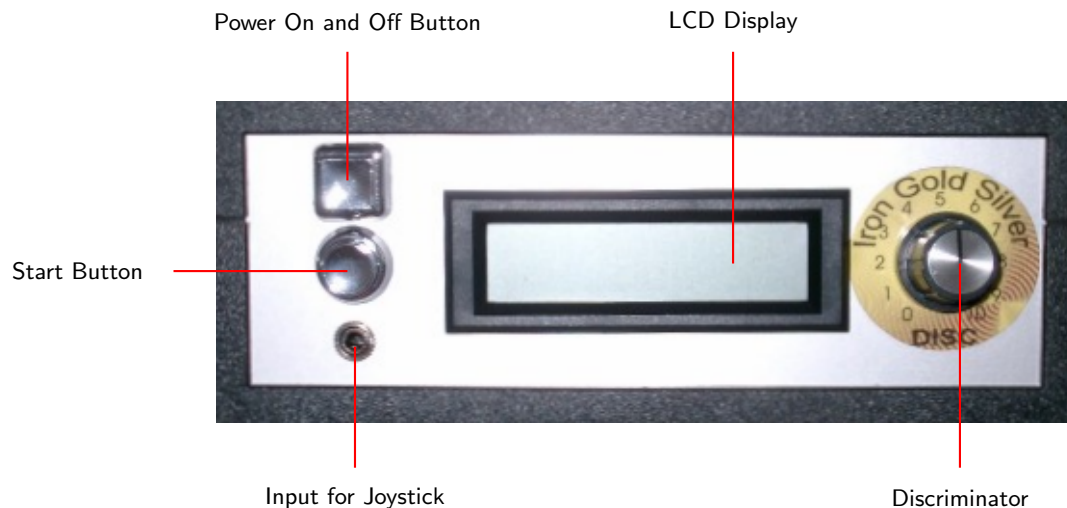


Figure 43: Front view

The **Power On and Off Button** is used to switch on and off the control unit. Before operating with your device you have to connect your external power supply and power it on.

The **LCD Display** indicates the current operating mode in which you are working. You can select your operating mode with the touchpad on the top of your device.

The **Start Button** is used to start your measurement and to release manually every impulse in the appropriate mode.

The **Input for Joystick** is used to connect the delivered joystick to the device. He fulfills the same functions like the **Start Button**, but is more comfortable and can facilitate the measurement procedure.

The **Discriminator** is used to adjust the discrimination. This regulator can filter certain materials. Further information you can find in section 10 on page 42.

8.2 Back View

Figure 44 shows the back side of the control unit with all connections.

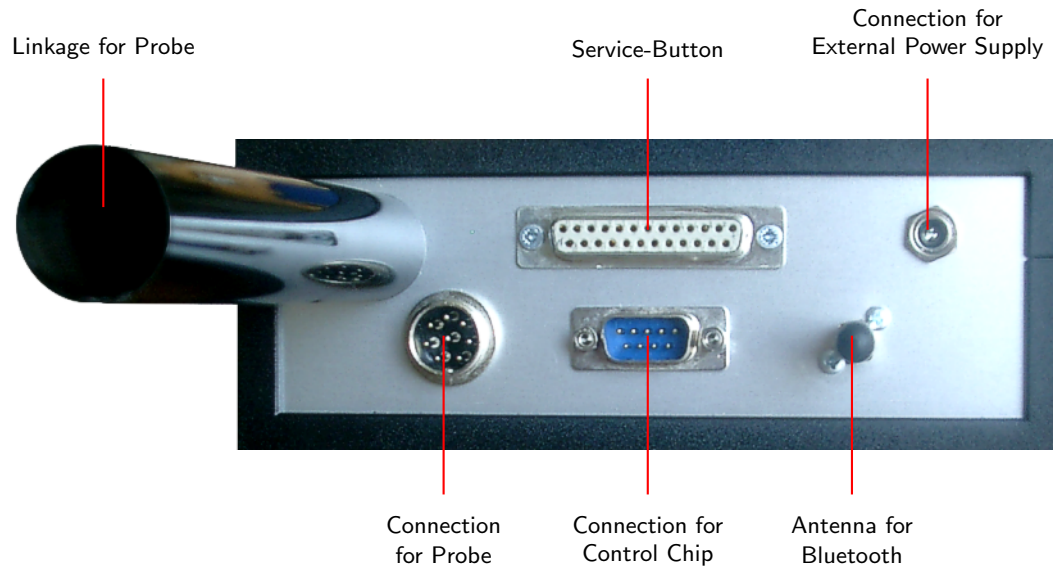


Figure 44: Back view

The Linkage for Probe is used to attach the coil probe for metal discrimination and data record.

The Service-Button is only necessary for maintenance of your device by the manufacturer. This button was also used by earlier models as a connection for data transmission to PC. For devices with Bluetooth data transmission via cable is no more necessary.

The Connection for External Power Supply is used to connect the device with the delivered battery. Here the external power supply (Power Tank) has to be connected.

In the Connection for Probe the cable of the probe has to be plugged in.

The Connection for Control Chip is used for the connection of the delivered control chip. This chip is absolutely necessary for operating with the device.

The Antenna for Bluetooth is used for the data transmission to PC.

8.3 Touchpad for Menu Navigation

The top of the device is including a display like you can see in figure 45. With this display you can navigate through the different operating modes in the menu.

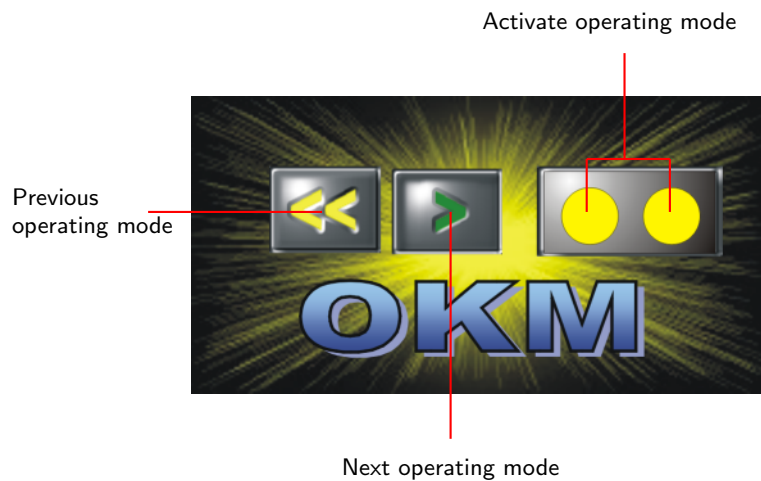


Figure 45: Display

With the keys *Previous operating mode* and *Next operating mode* you can select every single operating mode. Confirm your choice by pressing the key *Activate operating mode*. A general overview of the right selection of a operating mode you can find in section 9 on page 38.

Please press every key about 1 second to activate the desired action.

9 Operating Modes

In this section you will learn more about the different operating modes of the device. Every function is been explained in particularity in its proper subsection. The right selection of an operating mode depends primarily of your planned measurement. So for example there are some special functions which have to be used for a first measurement in a unknown area to get a general overview, against which others are more suitable for a detailed search and analysis with a special processing software program.

The device posseses the following operating modes:

- **Activate Detector**
Activate the metal detector for discrimination.
- **DiscScan Area Transfer To PC**
Send measured values with discrimination directly to a PC for analysis.
- **DiscScan Area Store In Memory**
Store measured values with discrimination in the internal memory of the device.
- **Manual Scan Store In Memory**
Store measured values without discrimination in the internal memory of the device.
- **DiscScan '10' Transfer To PC**
Send measured values without discrimination directly to a PC for analysis.
- **Transfer To PC**
Send measured values stored in the internal memory of the device to a PC for analysis.

Via a touchpad on the top of your device you can select and confirm your appropriate operating mode.

9.1 Activate Detector

With the operating mode „*Activate Detector*“ you are using the device like a normal metal detector with integrated discrimination.

The penetration depth of the metal detector is limited of 2m. But the depth is also depending of the size of an object. So for example it is not possible to detect a single coins in 1 meter depth.

The soil reconciliation is absolutely necessary in this operating mode, that the device can adjust itself to the ground. Further information about discrimination and the soil reconciliation you can find in section 10 on page 42.

After a correct soil reconciliation is done you can examine your area with the device while you are moving the probe evenly above the ground from left to right. As soon as you pass over an object which is not filtered by the discriminator you will hear an acoustic signal.

9.2 DiscScan Area Transfer To PC

In this operating mode you can measure until a depth of 18m¹. In this mode there is no depth measurement possible because the discrimination is activated. So you have to adjust the discriminator like explained in section 10 before confirming this operating mode.

Immediately after confirming the operating mode by pressing the key *Activate operating mode*, the message *Connecting with Computer ...* will appear on the display of your device. This procedure can take a few seconds. Further information about the connection establishment via Bluetooth you can find in section ?? on page ?. Afterwards you will be asked to press the *Start* button.

If the measured values are transferred to the PC, automatically a graphical representation will be created. An example you can find in figure 46.

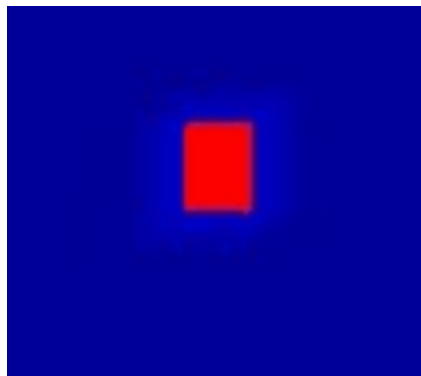


Figure 46: Graphical representation of a measurement with activated discrimination

If you did a correct soil reconciliation, you will get a blue picture of your measurement where metallic objects are represented in red color. Only metals which are not filtered by the discriminator are visible. If the discriminator is adjusted on *gold*, then gold, silver and aluminium will be represented in red color values. The correct use of the discriminator you can read in section 10 on page 42!

Besides the graphical representation you can also hear an acoustic signal, if you pass over a material on which the discriminator is adjusted.

To determine the depth of a located object, repeat this measurement with operating mode „*Manual Scan Store In Memory*“.

Please read carefully section 11.2 on page 46 where the principle procedure of a graphical measurement is explained.

¹The total penetration depth is strongly depending on the type of soil. In strong mineralized areas the penetration depth can be reduced.

9.3 DiscScan Area Store In Memory

This operating mode is nearly identically to function „*DiscScan Area Transfer To PC*“. The difference is that in this mode all measured values will be stored in the internal memory of the device. After your measurement is finished you can transfer all recorded data to your PC with function „*Transfer To PC*“ .

Only one measurement can be stored in the internal memory. If you are starting a new measurement all previous records will be deleted.

Read carefully section 11.2 on page 46, where the principle procedure for a graphical measurement is described.

9.4 Manual Scan Store In Memory

This operating mode is nearly identically to menu option „*DiscScan Area Store In Memory*“. The difference is that in this mode the discrimination is deactivated which means that all metals are indicated, independent of the regulation of the discriminator. Further more every single impulse (memory of measured values) has to be activated manually. Therefore you can use either the delivered joystick or the start button. After having finished your measurement you can transfer the data to your PC with the function „*Transfer To PC*“ . This operating mode is used for depth measurement of buried objects.

When all measured values are transferred to a connected PC a graphical representation will produce automatically. You can find an example in figure 47.

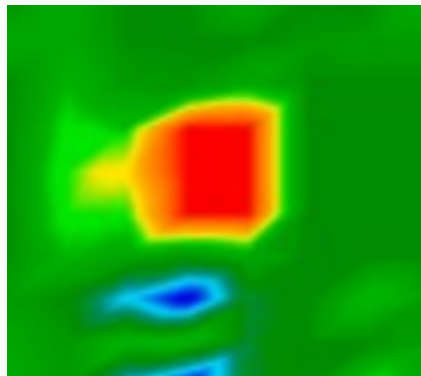


Figure 47: Graphical representation of a measurement without discrimination

The graphic should include green color values in majority, which represent normal ground. In this green area red and blue objects can be placed. Metallic objects are normally represented in red and cavities, water reserves and earth interferences in blue color. Beware that mineralisations of the ground are also shown in red color. How you can differentiate minerals and mineralisations from „*real*“ metals, you can read in section 11.1 on page 44 or in the manual of your software program.

It is absolutely necessary to read section 11.2 on page 46, where the principle procedure of a graphical measurement is described.

9.5 DiscScan '10' Transfer To PC

This operating mode is nearly according to menu option „*DiscScan Area Transfer To PC*“.

Immediately after confirming the operating mode by pressing the key *Activate operating mode*, the message *Connecting with Computer ...* will appear on the display of your device. This procedure can take a few seconds. Further information about the connection establishment via Bluetooth you can find in section ?? on page ??. Afterwards you will be asked to press the *Start* button.

The device stops after every 10 impulses and continues the measurement only when you press the *Start* button. With this action further 10 impulses are sent from the device and measure results will be recorded one by one. Instead of the *Start* button you can also use the delivered Joystick. The data will not be recorded in the internal memory of your device, they will be transmitted directly to the connected computer.

9.6 Transfer To PC

With operating mode „*Transfer to PC*“ measured values can be transmitted from the internal memory of the device to a computer. Therefore it is necessary that the software has to be prepared before starting the transmission. Only if all preparations of the software are made correctly and the software program is ready to receive the measured data you can confirm this function. Further information about a correct preparation of the software program you can find in the manual of your software product.

Immediately after confirming the operating mode by pressing the key *Activate operating mode*, the message *Connecting with Computer ...* will appear on the display of your device. This procedure can take a few seconds. Further information about the connection establishment via Bluetooth you can find in section ?? on page ??. Afterwards you will be asked to press the *Start* button.

The measured data will now be transmitted to your computer at one time.

10 Discrimination

In this section the regulation of the discrimination and the soil reconciliation is explained.

10.1 Adjust the Discriminator

The discriminator serves to filter certain materials. So it is possible to „*exclude*“ for example worthless iron and steel objects. Or people who are hunting for treasures and gold are able to exclude other materials with the help of this discriminator.



Figure 48: Adjustment of discrimination

In figure 48 the regulator to adjust the discrimination is represented. This regulator can filter certain materials. Table 5 explains the adjustment in the case of normal ground conditions².

Adjustment	Indicated materials
0	All metallic objects
3	Iron, gold, bronze, silver, aluminium
5	Gold, bronze, silver, aluminium
7	Silver, aluminium
10	Aluminium

Table 5: Standard adjustment of the discrimination

Beware: When you adjust the regulator for discrimination on gold, the detector reacts besides gold also on bronze, silver and aluminium. To find out if there is really gold in the ground you have to follow the following instructions:

1. Switch the regulator on gold and start your soil examinations until you reach a place where the detector reacts positive.
2. Now switch the discriminator on silver and examine this place again. Following there will be two possibilities:
 - the detector reacts positive → the material under the ground is *not* gold, but could be silver or aluminium.

²The indications from table 5 concern the use in normal type of soil. In extreme conditions (mineralisation, salt deposits, ...) they can vary from this normal value.

- the detector does not react → there is probably golden material in the ground but also bronze is possible.

Please consider that you always should do the soil reconciliation, which is explained in this following section.

10.2 Soil Reconciliation

A correct soil reconciliation is absolutely necessary that the adjusted discrimination can work properly. If the soil reconciliation is not done correctly the operation of the device and the integrated discriminator cannot work properly.

In the following section you can find a list of all necessary working procedures to do a correct soil reconciliation:

1. Power on the device and wait until the acoustic signal disappears.
2. Adjust the discriminator on the material you like, see previous section.
3. Put the device with coil probe about 5cm above the ground.
4. Select the operating mode you like and confirm.

If you hear an acoustic signal from the metal detector after these indications, then the soil reconciliation is not finished correctly. Repeat these steps until there is no acoustic signal from the metal detector.

The following causes can prevent a correct soil reconciliation:

- You are staying above a metallic object.
- You confirm the operating mode with integrated discriminator without holding the probe directly above the ground.
- You are holding the probe during your confirmation of the operating mode with integrated discriminator to high and then minimize the distance to the ground.
- You are turning the regulator for discrimination during soil reconciliation.

Only if you are doing a correct soil reconciliation the functionality of discrimination can be guaranteed.

11 Analysis and Evaluation of Measurements

Before measurement you have to know what kind of objects or cavities you are looking for and if the area you choose is suitable for this. Measurement without a plan will not give you the results you would like. For this reason please consider the following indications:

- What are you looking for (graves, tunnels, buried objects, ...)? This question has its effects on your concrete manner to measure an area. If you are looking for big objects you can enlarge your distance between the measure points (impulses), for small objects use small distances (see section 11.3 on page 47).
- Inform yourself about the area you select for measurement. Is it useful to search at this place? Are there historical indications, which confirm your speculations? What type of soil is on this area? Are there good conditions for data recording?
- Your first measurement in a unknown area has to be large enough to get representative values (f. ex. 20 impulses, 20 search lines).
- What is the form of the object you search? If you are looking for an angular metal box, the identified object in your graphic should have a form according to this.
- To get exact values concerning the depth measurement, the object has to be in the centre of the graphic, which means it has to be framed by normal reference values (normal ground). If the object is on the side of the graphic and not totally visible a correct depth measurement is not possible.
- There should not be more than one object in a graphic. This will influence the exactness of depth measurement.
- You should do at least two control scans to get sure about your results. So you also can recognize and isolate mineralized ground (see section 11.1 on page 44).

11.1 Metal or Mineralisation

At the beginning it is not always easy to make a difference between real objects and mineralized ground. In principle metals are represented in red color, but mineralized accumulations can also include red signals.

Here some advice how you can differentiate between a real object and a mineralisation:

- **Form**
If the object represented in your graphic has a special form (f. ex. rectangle, circle, ...), you can conclude of a possible real found.
- **Color**
If there are many yellow and orange color values around the object, it will be probably a mineralisation.
- **Depth**
With a small depth of about 0,10m or 0,40m there is a high possibility that there is only a mineralisation of the ground.

- **Color Filter**

If position and form of the object are changing with the use of the color filter it is probably a mineralisation.

- **Control Scan**

If position, depth and form of the object stay nearly the same, also in further control scans you can conclude of a real object. Also if some graphics look similiar you always have to compare all indications.

Figure 49 shows a real object (left side) and a mineralized accumulation (right).

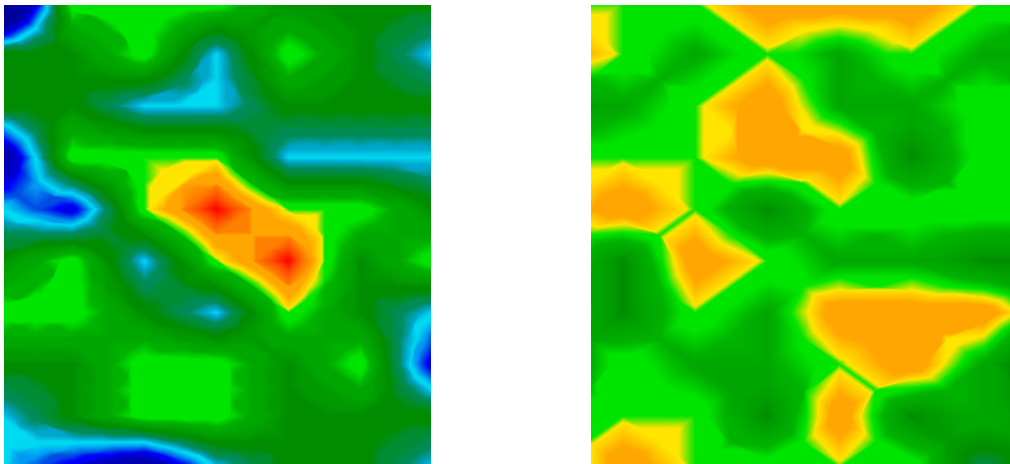


Figure 49: Comparison of object and mineral

11.2 General Procedure

The main rule for scanning an area is:

**The more exactly you scan an area
the better will be your graphical evaluation.**

You have to scan in a given manner that the software can calculate the measured values in the right way. Your device has following possibilities:

- **Zig-Zag**

Figure 50 shows all different ways of scanning in a scheme. The measurement starts at your starting point ① and ends at point ②.

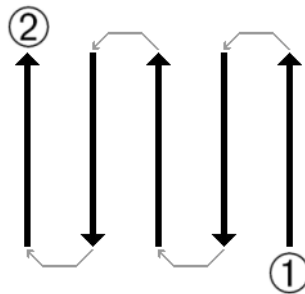


Figure 50: Given manner

If you have finished one scan line, the next line has to be on the *left* side. Do not change the direction of your probe.

The more you repeat your scanning above a possible object (control scans), the better you can decide afterwards if it is a real object or not. Temperature, other radio transmission, sun energy, mineralisation of the ground, loam, salt, water, etc. can influence negatively the measure results.

Before you start to dig, take your time to do some control scans. Repeat exactly the same scan about 3 - 5 times, to be sure about your results. Only if all these graphics have almost the same values you can be sure about your results.

Figure 51 is a graphical representation of a measured area. The blue rectangle marks a possible object in the ground.

To be absolutely sure that there is an object in the ground you have to do a control scan. Measure exactly the same area, same starting point and the same number of impulses and lines. Take also the same distance between the measure points. Figure 52 and 53 shows two possible measurements.

It is easy to recognize that the control scan in figure 52 is totally different from the first measurement in figure 51. This means only a mineralisation of the ground, not a concrete metallic object.

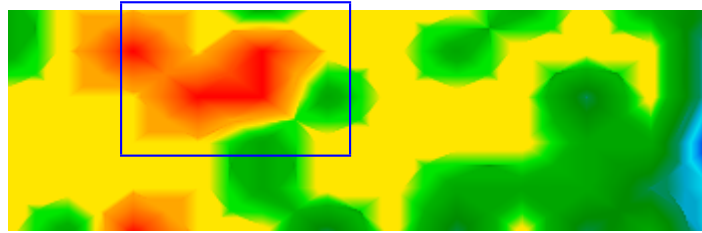


Figure 51: First measurement of an area

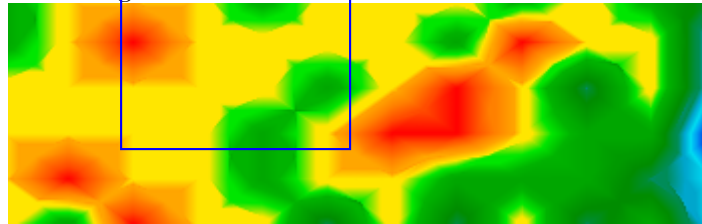


Figure 52: Control scan, Variant A

Even if the control scan in figure 53 is not exactly the same to the first one, you can see that the blue marked parts show nearly the same values. This is a reference for the existence of an object.

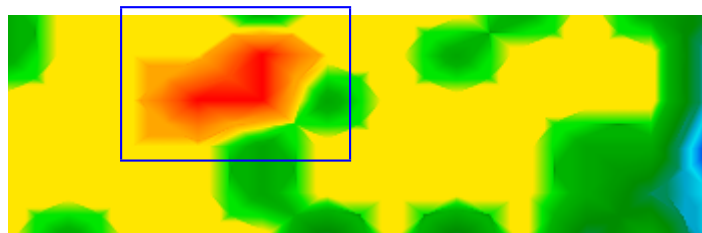


Figure 53: Control scan, Variant B

Before you can determine the depth of the detected object you have to scan a further image. It only should cover the blue marked area. All other metals and mineralized ground should be ignored because it would disturb the measurement. After this you can determine the correct depth.

11.3 Regulation of the Number of Impulses

There is no special rule for the number of impulses. But there are different aspects which has to be considered. These are for example

- the length of your measured area and
- the size of the objects you are searching.

The optimal distance between two impulses is about 20cm until 30cm. The smaller the distance between two impulses is the more exactly will be the graphical representation. If you are looking

for small objects you have to select a small distance, for big objects you can increase the distance between each impulse.

Figure 54 shows the effects of the distance and the number of impulses per scan line for some objects.

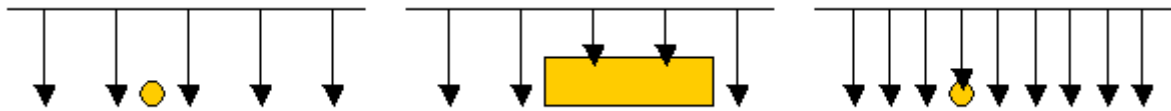


Figure 54: Effect of number of impulses and their distance

Figure 55 shows the difference between very few impulses (left side) and much more impulses on the same scan line length (right side). The second record (right side) shows much more details and also smaller objects can be seen.

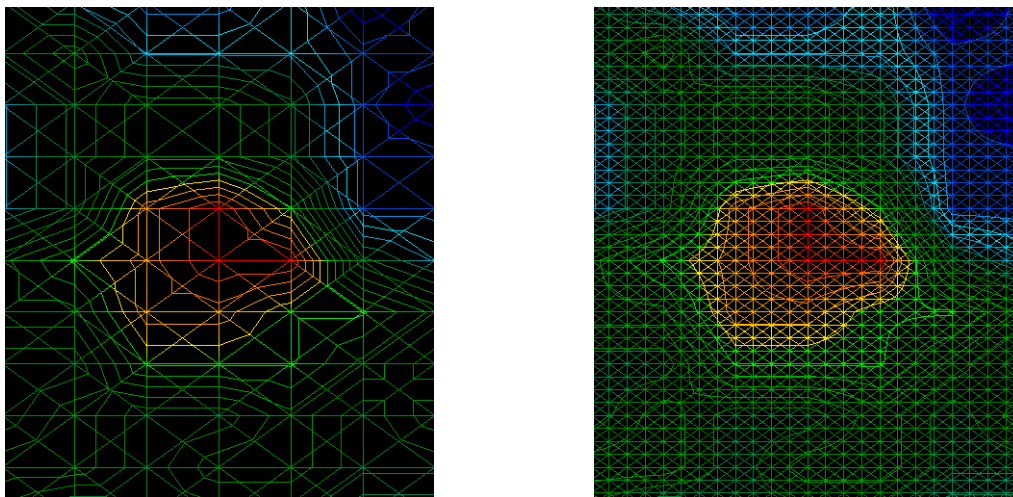


Figure 55: Comparison of small and high number of impulses

Do not hesitate to record more measurements with different numbers of impulses. For example you can scan a large area before doing a second detailed precision measurement. Especially for the search of bigger objects you can proceed like this. With this manner you can measure relatively fast a large area and afterwards you can record the interesting subsection.

Further information about the graphical analysis you can find in the appropriate software manual.

12 Danger of Explosion during Excavation

Unfortunately, the last two world wars also made the ground in many places of the world a potentially explosive scrap heap. A host of those lethal relics are still buried in the ground. Do not start digging and hacking for an object wildly when you receive a signal of a piece of metal from your device. Firstly, you might indeed cause irreparable damage to a truly rare find, and secondly, there is a chance that the object reacts in an insulted way and strikes back.

Note the colour of the ground close to the surface. A red or reddish color of the ground is an indicator of rust traces. As regards the finds themselves, you should definitely pay attention to their shape. Curved or round objects should be a sign of alarm, especially if buttons, rings or little pegs can be identified or felt. The same applies to recognizable ammunition or bullets and shells. Leave that stuff where it is, do not touch anything and, most importantly, do not take any of it home with you. The killing machines of war made use of diabolical inventions such as rocker fuses, acid fuses and ball fuses. Those components have been rusting away in the course of time, and the slightest movement may cause parts of them to break and be triggered. Even seemingly harmless objects such as cartridges or large ammunition are anything but that.

Explosives may have become crystalline over time, that is, sugar-like crystals have formed. Moving such an object may cause those crystals to produce friction, leading to an explosion. If you come across such relics, mark the place and do not fail to report the find to the police. Such objects always pose a danger to the life of hikers, walkers, farmers or children.

13 Tutorial

In this section the essential procedure to work with the device will be explained in detail on the basis of some helpful examples. You will learn step by step how to prepare a measurement, how to record measured data and how to transfer these values to a computer.

13.1 Searching a Metal Box

Assume that we are looking for an iron box which is filled with gold coins. The box is about 50cm long, 40cm wide and 40cm high. This treasure box was buried in the ground about 180 years ago in about 1m depth. The surface which has to be examined is 20m long and 10m wide.

13.1.1 Preparing a measurement

Before you switch on the device and start to measure your area you have to clarify the following questions:

- How many impulses I need in one measure line?
- What should be the optimal distance between the impulses?
- In which distance should be the measure lines?
- Which operating mode I have to select?

Because we don't know in which position the box was buried, we have to assume that the smallest side of this box is showing upward. In our case this would be a surface of 40cm x 40cm. We have to choose our distance between the impulses small accordingly to this side. Under no circumstances this distance should be more than 40cm. The smaller the distance the more exactly will be the graphical representation. But please note that a smaller distance between impulses means also an expenditure of time. A good average value in our case is 25cm.

After knowing the distance between every impulse, we can now calculate how many impulses we need for one measure line. The following formula should be used for calculation:

$$\text{Number of impulses} = \frac{\text{Length of measure line}}{\text{Distance between impulses}} + 1$$

If we use the determined values from our example in the formula mentioned above we will get the following results:

$$\text{Number of impulses} = \frac{20m}{0,25m} + 1 = 81$$

Like you can see, there are many impulses needed to do an exact measurement. We advice to split the complete area in some smaller parts to simplify the measurement. In our example we can scan two partial surfaces with the dimensions 10m x 10m. For this field size we only need 41 impulses per measure line.

Now you have to clarify which distance should be optimal between the measure lines. It is favorable to select the same distance like the distance between the impulses. So we have to record in every partial area 41 measure lines with 41 impulses per line.

To finish the preparations you have to select the correct operating mode. In our example we will take the operating mode *DiscStore Areal Scan In Memory*, and turn the discriminator on iron.

13.1.2 Doing a measurement

Now please go to your selected starting point, turn the discriminator on position 0 and power on the device. Please take care to do a correct soil reconciliation like explained in section 10 on page 42.

As soon as the device is ready for the measurement you have to scan your measured area continuously and evenly line by line. Move the device in the same speed that between every impulse signal there is a distance of 25cm. Further information about this you can find also in section 11.2 on page 46.

Please take care that:

- the probe has always the same distance to the ground,
- you don't turn the device during the measurement and
- you do not variate unnecessarily your step speed.

13.1.3 Analysing the measuring results

If all measured values are stored successfully in the internal memory of the device than they can be transferred to a computer for analysis with a suitable software program. In our example we will take the delivered *Future Series – Software*. If you are using another software, please read in the manual according to your program how to transfer data and how to analyse them!

The following steps are necessary for data transmission and for the work after with the graphical representations:

- Produce a correct data connection from measure instrument to PC
- Transfer measured values
- Working with the graphical representation (signal correction, filter, ...)
- Graphical analysis (conclusion, measurement, ...)

To transfer all data to the software, you have to connect the Bluetooth Dongle with the USB COM-Port of your computer. Start the software program and select in the menu on the left side option *New*. Now select the serial COM-Port on which Bluetooth was been installed and enter the number of impulses per search line. In our example you have to enter 41. Then please click *OK* to confirm.

Power on your device and select the operating mode *Transfer To PC*. Confirm your selection by pressing key *Activate operating mode*. The information *Connecting with Computer . . .* will appear on the display of your device. As soon as the connection is activated a graphical representation will appear on your screen. When all data is been transferred to your PC you can power off the device.

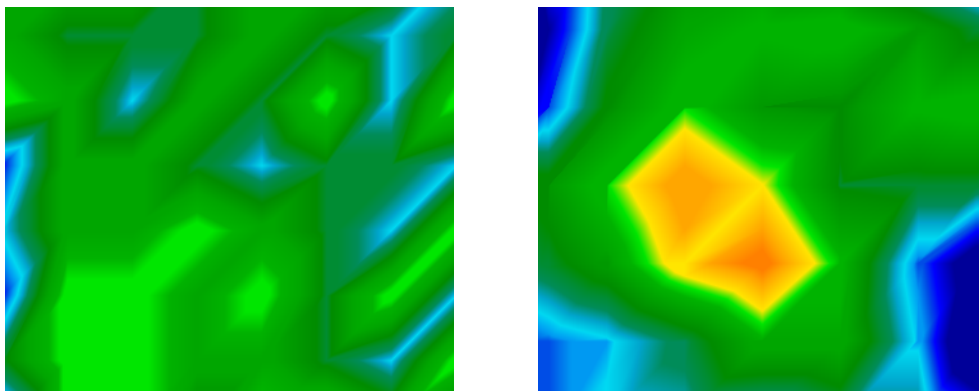


Figure 56: Possible graphical representation of a measurement

Figure 56 shows two different graphics like they possibly could appear on the screen of your PC. The left graphic shows no considerable results which could be of interest whereby the right graphic is including some interesting objects.

An important aspect on which you always should take care of:

Do not only take attention to certain colors, control also the form of specific objects.

14 Maintenance and Services

In this section you will learn how to maintain your measuring instrument with all included accessories to keep it in good condition a long time and to get good measuring results.

The following list indicates what you absolutely should avoid:

- penetrating water
- strong dirt and dust deposits
- hard impacts
- strong magnetic fields
- high and long lasting heat effect

If you want to clean your device please use a dry rag of soft material. To avoid any damage you should transport the device and accessories always in the appropriate carrying cases.

Beware that all batteries and accumulators are always charged fully while operating with your system. You should only load the batteries when they are completely discharged no matter if you are working with the external power supply or with the internal accumulators. In this way a long durability of the used batteries is guaranteed.

To load the external and internal batteries you have to use only chargers which are part of our scope of delivery.

Index

Activate operating mode, 37, 39, 41, 52

Bluetooth, 17, 22

Bluetooth-Dongle, 26, 30, 32–34

Coil probe, 36, *see* Probe

Detector, 43

Discrimination, 38, 42

Discriminator, 35, 42

Dongle, 17, 22, 52

Joystick, 35, 40, 41

joystick, 40

Metal Detector, 38, 43

Next operating mode, 37

PIN-Code, 33

Previous operating mode, 37

Probe, 43

Soil reconciliation, 38, 39, 42, 43, 51

Start button, 39–41

start button, 40

USB, 17, 22, 52